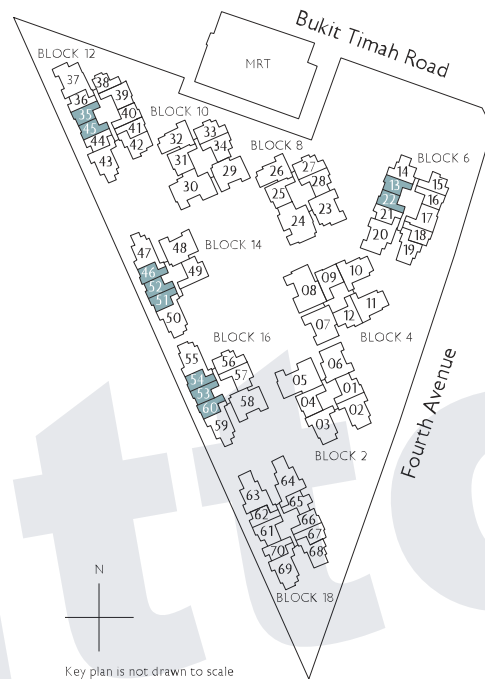
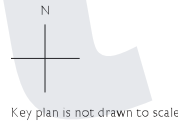


# 1-Bedroom

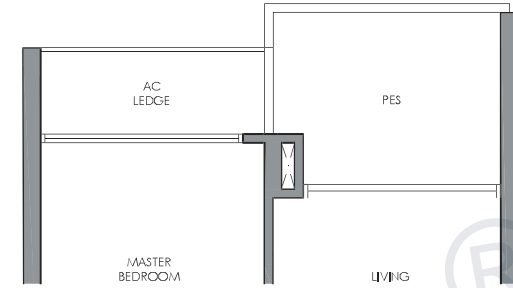


- Fridge
- Induction Hob
- Shoe Cabinet
- Washer cum Dryer
- Distribution Board / Store

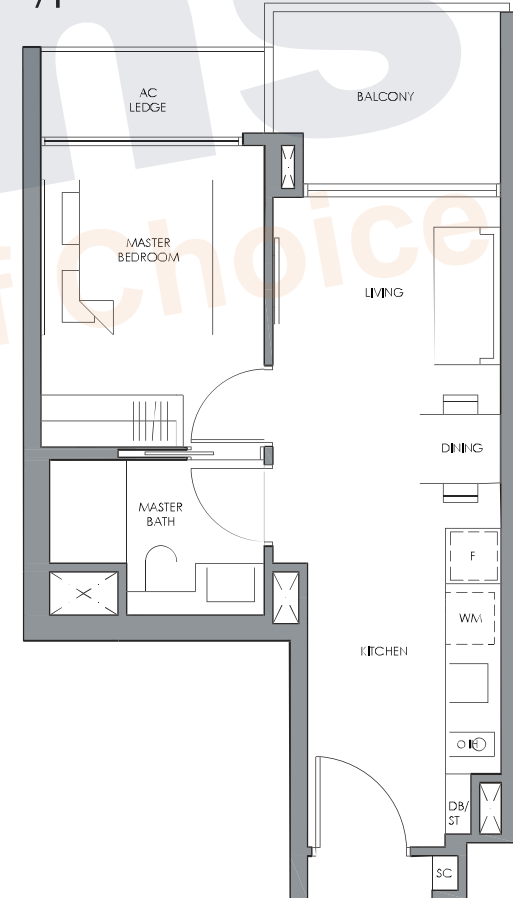
- F
- IH
- SC
- WM
- DB/ST



## Type A1a(p)



## Type A1a



### Type A1a(p)

45 sq m / 484 sq ft  
Inclusive of 6 sq m PES  
& 3 sq m AC Ledge

- |          |          |
|----------|----------|
| Block 6  | Block 14 |
| #01-13   | #01-46 * |
| #01-22 * | #01-51   |
|          | #01-52 * |

- |          |          |
|----------|----------|
| Block 12 | Block 16 |
| #01-35   | #01-53   |
| #01-45 * | #01-54 * |
|          | #01-60   |

### Type A1a

45 sq m / 484 sq ft  
Inclusive of 6 sq m Balcony  
& 3 sq m AC Ledge

- |                    |            |
|--------------------|------------|
| Block 6            | Block 14   |
| #02-13 to #10-13   | #02-46 * ^ |
| #02-22 to #10-22 * | #02-51 ^   |
|                    | #02-52 * ^ |

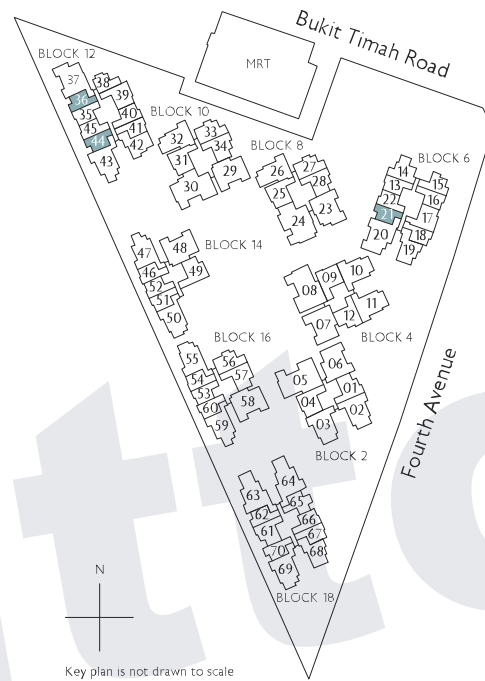
- |                    |            |
|--------------------|------------|
| Block 12           | Block 16   |
| #02-35 to #10-35   | #02-53 ^   |
| #02-45 to #10-45 * | #02-54 * ^ |
|                    | #02-60 ^   |



\* Mirror Image    ^ High Ceiling

All plans are subject to change as may be required or approved by the relevant authorities. All floor areas are approximate measurements only and are subject to final survey. The balcony shall not be enclosed except with the approved balcony screen. For an illustration of the approved balcony screen, please refer to the diagram annexed hereto as "Annexure 1"

# 1-Bedroom



Fridge  
Induction Hob  
Shoe Cabinet  
Washer cum Dryer  
Distribution Board / Store

F  
IH  
SC  
WM  
DB/ST

## Type A1b(p)

45 sq m / 484 sq ft  
Inclusive of 6 sq m PES  
& 3 sq m AC Ledge

Block 6  
#01-21

Block 12  
#01-36 \*  
#01-44

0 1 3 5M

\* Mirror Image ^ High Ceiling

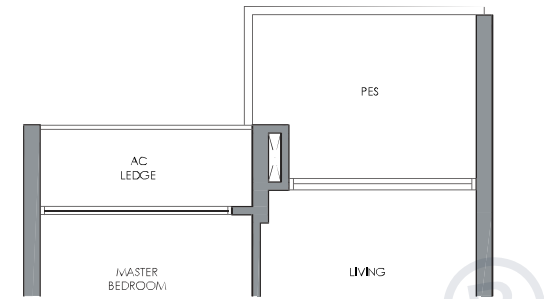
## Type A1b

45 sq m / 484 sq ft  
Inclusive of 6 sq m Balcony  
& 3 sq m AC Ledge

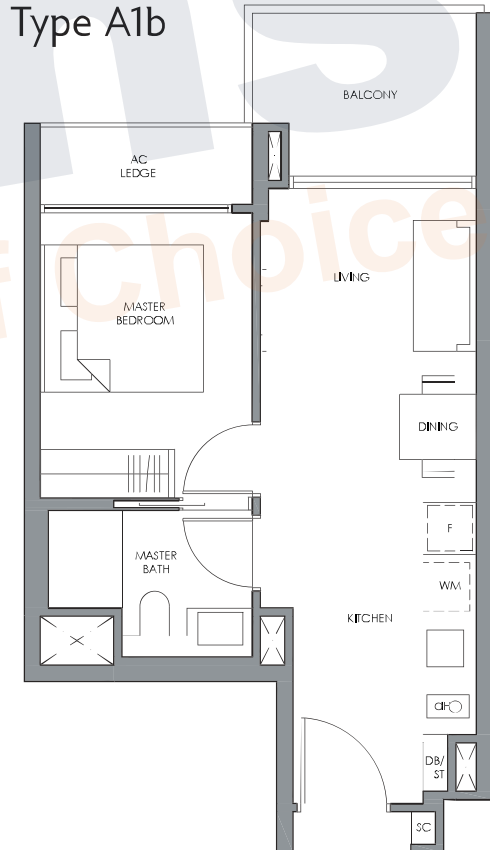
Block 6  
#02-21 to #10-21

Block 12  
#02-36 to #10-36 \*  
#02-44 to #10-44

## Type A1b(p)

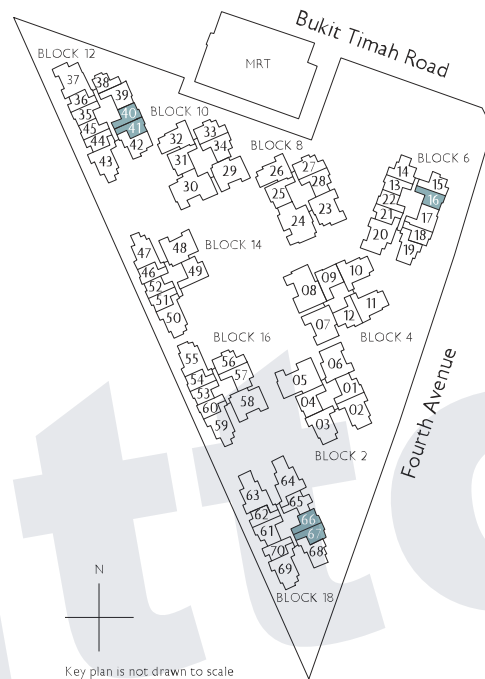


## Type A1b



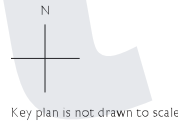
All plans are subject to change as may be required or approved by the relevant authorities. All floor areas are approximate measurements only and are subject to final survey. The balcony shall not be enclosed except with the approved balcony screen. For an illustration of the approved balcony screen, please refer to the diagram annexed hereto as "Annexure 1"

# 1-Bedroom



Fridge  
Induction Hob  
Shoe Cabinet  
Washer cum Dryer  
Distribution Board / Store

F  
IH  
SC  
WM  
DB/ST



## Type A1c(p)

47 sq m / 506 sq ft  
Inclusive of 6 sq m PES  
& 3 sq m AC Ledge

Block 12  
#01-41 \*

Block 18  
#01-66  
#01-67 \*



\* Mirror Image ^ High Ceiling

## Type A1c

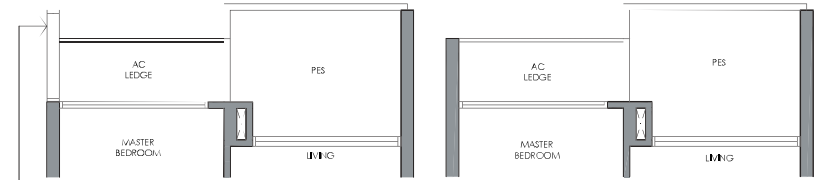
47 sq m / 506 sq ft  
Inclusive of 6 sq m Balcony  
& 3 sq m AC Ledge

Block 6  
#02-16 to #06-16 \*  
#07-16 to #10-16 \* (security screen)

Block 12  
#02-40 to #10-40  
#02-41 to #10-41 \*

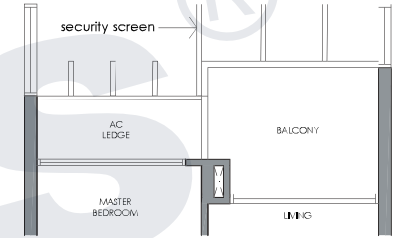
Block 18  
#02-66 to #06-66  
#02-67 to #06-67 \*

## Type A1c(p)

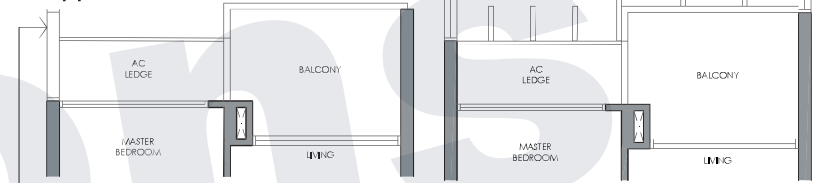


For unit stack 66 & 67 only

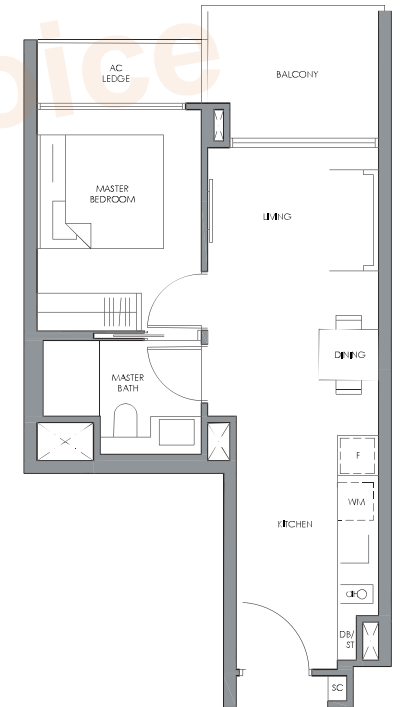
## Type A1c WITH SECURITY SCREEN



## Type A1c

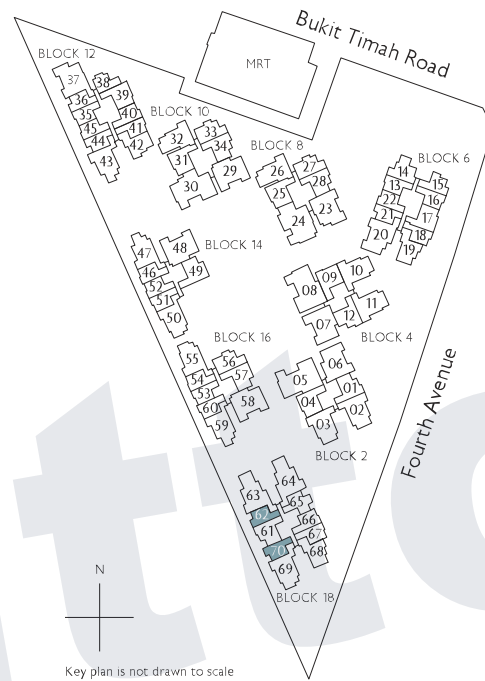


For unit stack 66 & 67 only



All plans are subject to change as may be required or approved by the relevant authorities. All floor areas are approximate measurements only and are subject to final survey. The balcony shall not be enclosed except with the approved balcony screen. For an illustration of the approved balcony screen, please refer to the diagram annexed hereto as "Annexure 1"

# 1-Bedroom



Fridge  
Induction Hob  
Shoe Cabinet  
Washer cum Dryer  
Distribution Board / Store

F  
IH  
SC  
WM  
DB/ST

## Type A1d(p)

47 sq m / 506 sq ft  
Inclusive of 6 sq m PES  
& 3 sq m AC Ledge

Block 18  
#01-62 \*  
#01-70

## Type A1d

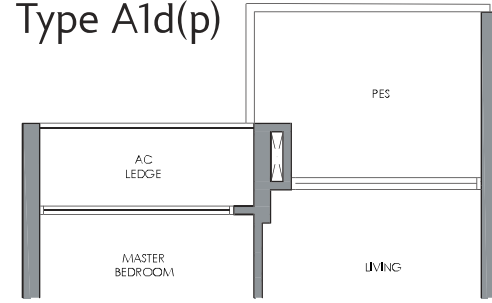
47 sq m / 506 sq ft  
Inclusive of 6 sq m Balcony  
& 3 sq m AC Ledge

Block 18  
#02-62 to #06-62 \*  
#02-70 to #06-70

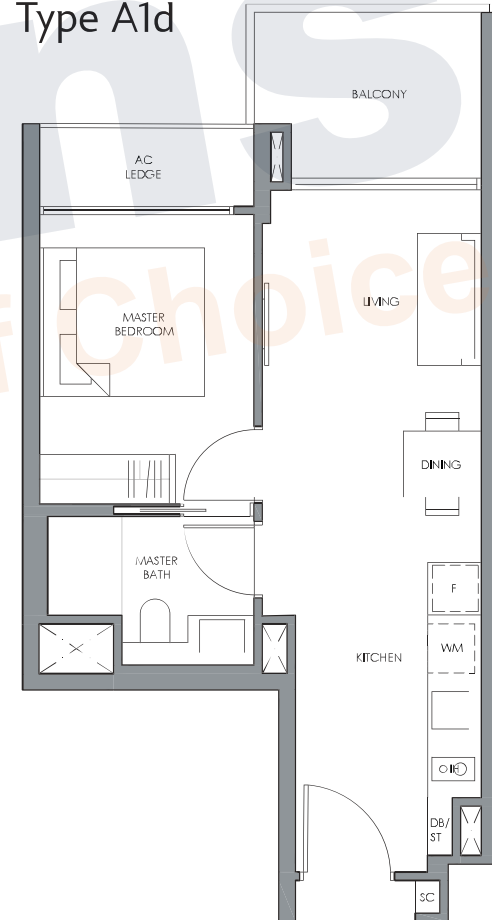
0 1 3 5M

\* Mirror Image ^ High Ceiling

## Type A1d(p)



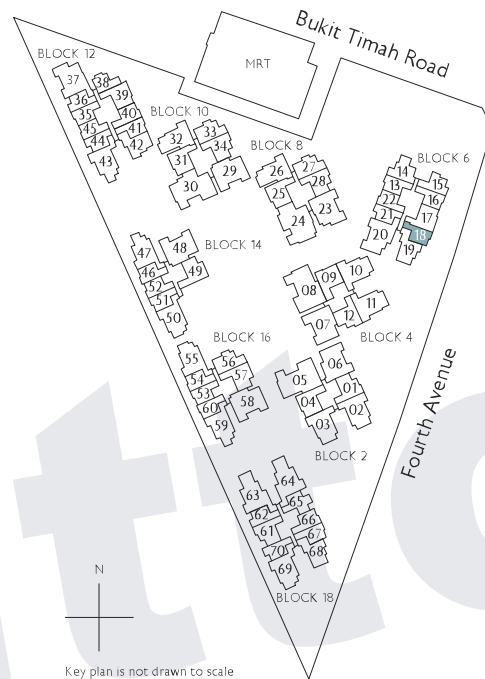
## Type A1d



All plans are subject to change as may be required or approved by the relevant authorities. All floor areas are approximate measurements only and are subject to final survey. The balcony shall not be enclosed except with the approved balcony screen. For an illustration of the approved balcony screen, please refer to the diagram annexed hereto as "Annexure 1"



# 1-Bedroom



Fridge  
Induction Hob  
Shoe Cabinet  
Washer cum Dryer  
Distribution Board / Store

F  
IH  
SC  
WM  
DB/ST

N  
Key plan is not drawn to scale

## Type A2(p)

46 sq m / 495 sq ft  
Inclusive of 6 sq m PES  
& 3 sq m AC Ledge

Block 6  
#01-18

## Type A2

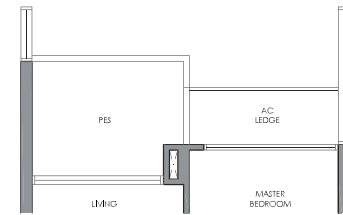
46 sq m / 495 sq ft  
Inclusive of 6 sq m Balcony  
& 3 sq m AC Ledge

Block 6  
#02-18 to #06-18  
#07-18 to #10-18 (security screen)

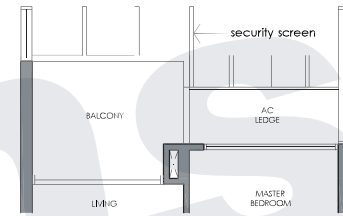
0 1 3 5M

\* Mirror Image ^ High Ceiling

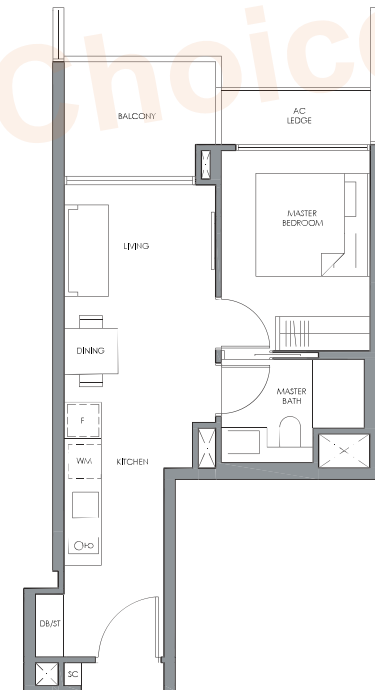
## Type A2(p)



## Type A2 WITH SECURITY SCREEN

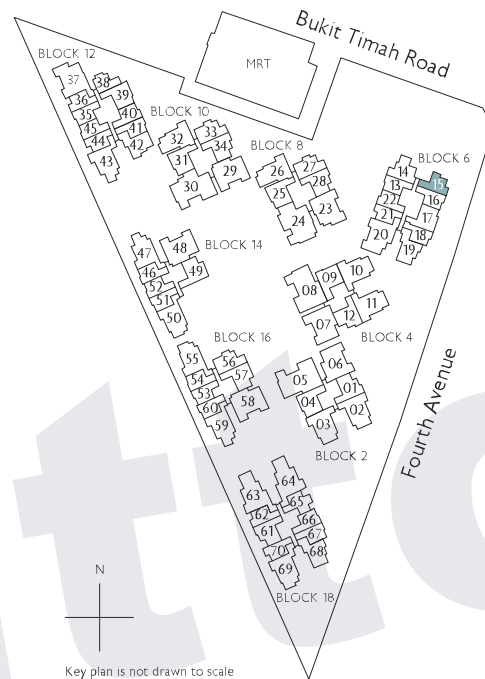


## Type A2



All plans are subject to change as may be required or approved by the relevant authorities. All floor areas are approximate measurements only and are subject to final survey. The balcony shall not be enclosed except with the approved balcony screen. For an illustration of the approved balcony screen, please refer to the diagram annexed hereto as "Annexure 1"

# 1-Bedroom



Fridge  
Induction Hob  
Shoe Cabinet  
Washer cum Dryer  
Distribution Board / Store

F  
IH  
SC  
WM  
DB/ST

## Type A3(p)

48 sq m / 517 sq ft  
Inclusive of 6 sq m PES  
& 4 sq m AC Ledge

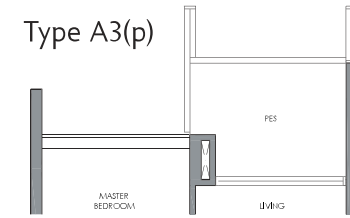
Block 6  
#01-15

## Type A3

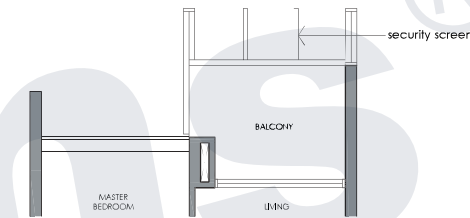
48 sq m / 517 sq ft  
Inclusive of 6 sq m Balcony  
& 4 sq m AC Ledge

Block 6  
#02-15 to #06-15  
#07-15 to #10-15 (security screen)

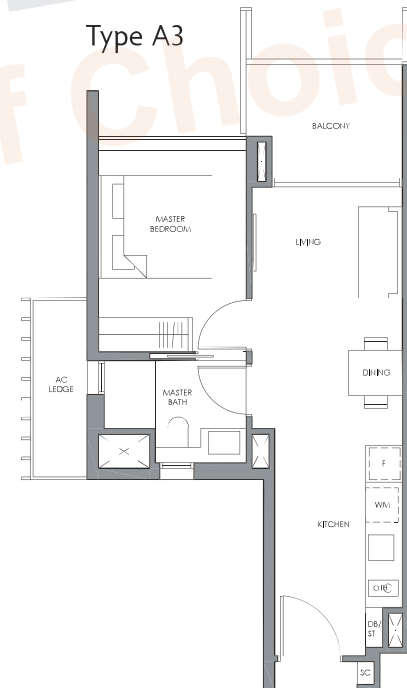
0 1 3 5M  
\* Mirror Image ^ High Ceiling



## Type A3 WITH SECURITY SCREEN



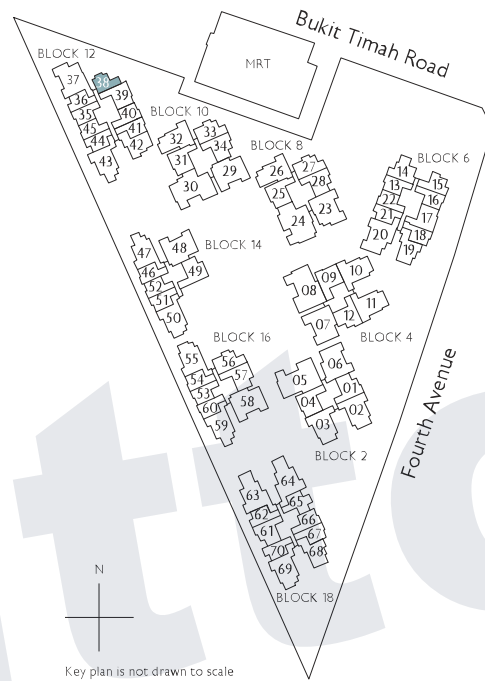
## Type A3



All plans are subject to change as may be required or approved by the relevant authorities. All floor areas are approximate measurements only and are subject to final survey. The balcony shall not be enclosed except with the approved balcony screen. For an illustration of the approved balcony screen, please refer to the diagram annexed hereto as "Annexure 1"

# 1-Bedroom

# Type A4



- Fridge
- Induction Hob
- Shoe Cabinet
- Washer cum Dryer
- Distribution Board / Store
- F
- IH
- SC
- WM
- DB/ST



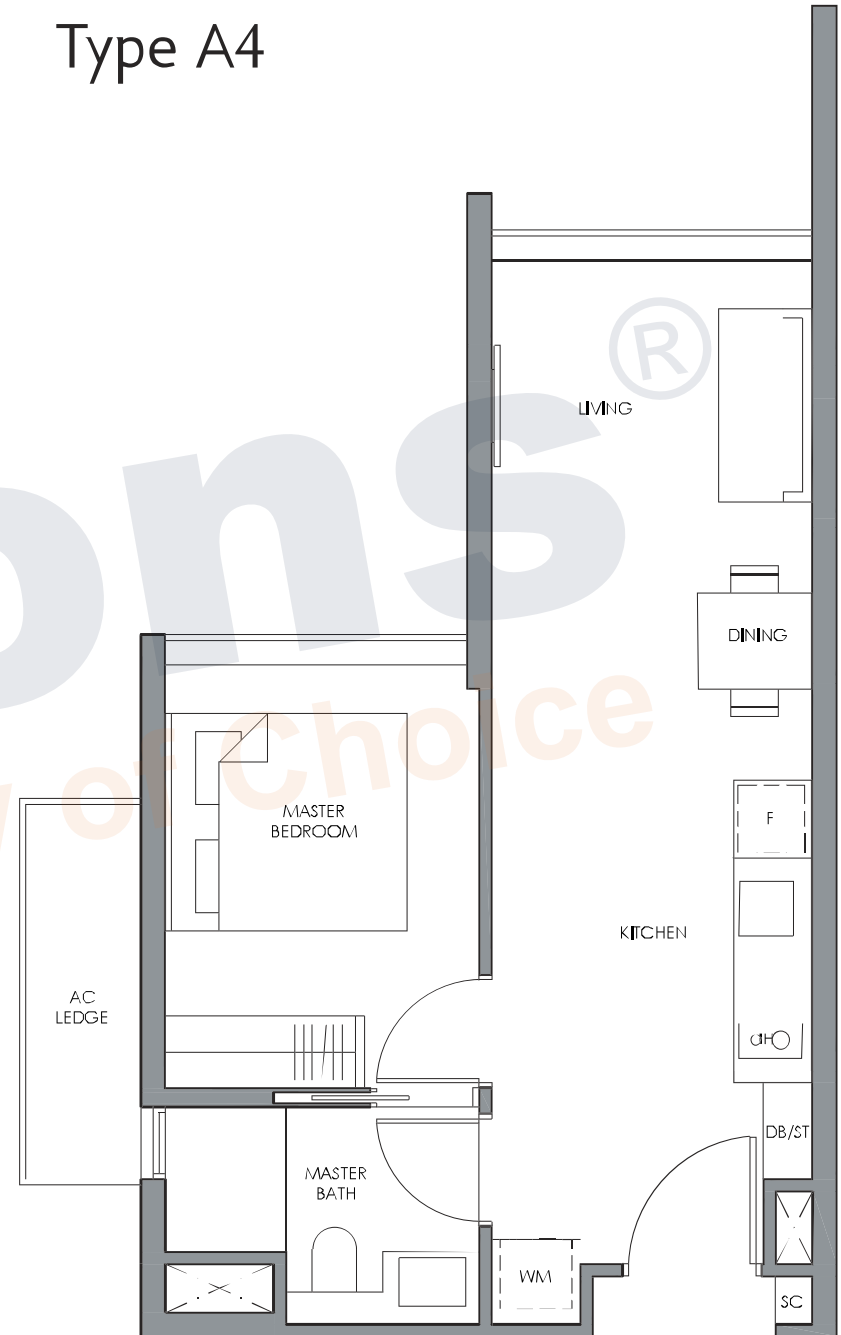
## Type A4

44 sq m / 474 sq ft  
Inclusive of 4 sq m AC Ledge

Block 12  
#01-38 to #10-38

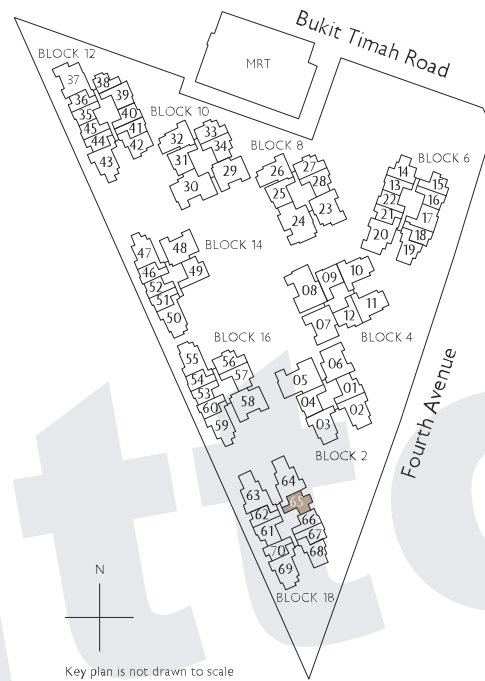


\* Mirror Image    ^ High Ceiling



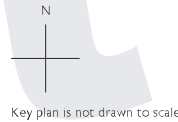
All plans are subject to change as may be required or approved by the relevant authorities. All floor areas are approximate measurements only and are subject to final survey. The balcony shall not be enclosed except with the approved balcony screen. For an illustration of the approved balcony screen, please refer to the diagram annexed hereto as "Annexure 1"

# 2-Bedroom

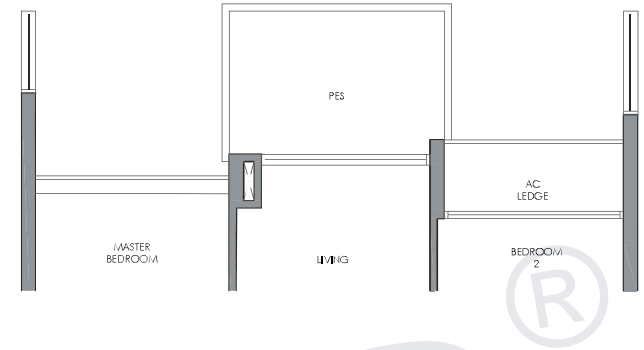


- Fridge
- Induction Hob
- Shoe Cabinet
- Washer cum Dryer
- Distribution Board / Store

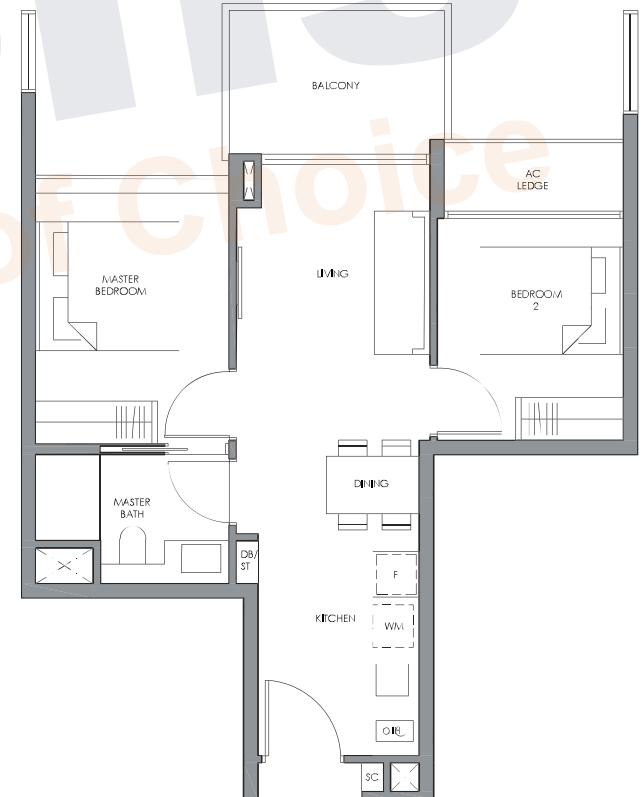
- F
- IH
- SC
- WM
- DB/ST



## Type B1(p)



## Type B1



## Type B1(p)

58 sq m / 624 sq ft  
Inclusive of 7 sq m PES  
& 3 sq m AC Ledge

Block 18  
#01-65

## Type B1

58 sq m / 624 sq ft  
Inclusive of 7 sq m Balcony  
& 3 sq m AC Ledge

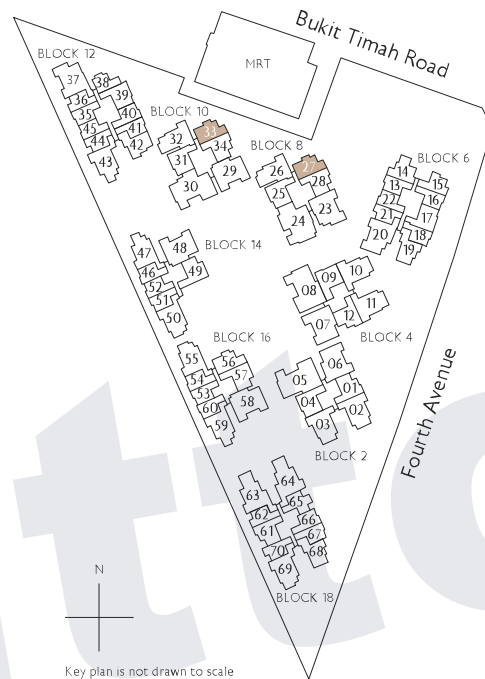
Block 18  
#02-65 to #06-65



\* Mirror Image ^ High Ceiling

All plans are subject to change as may be required or approved by the relevant authorities. All floor areas are approximate measurements only and are subject to final survey. The balcony shall not be enclosed except with the approved balcony screen. For an illustration of the approved balcony screen, please refer to the diagram annexed hereto as "Annexure 1"

# 2-Bedroom



Fridge  
Induction Hob  
Shoe Cabinet  
Washer cum Dryer  
Distribution Board / Store

F  
IH  
SC  
WM  
DB/ST

## Type B2a(p)

60 sq m / 646 sq ft  
Inclusive of 6 sq m PES  
& 4 sq m AC Ledge

Block 8  
#01-27

Block 10  
#01-33

0 1 3 5M

\* Mirror Image ^ High Ceiling

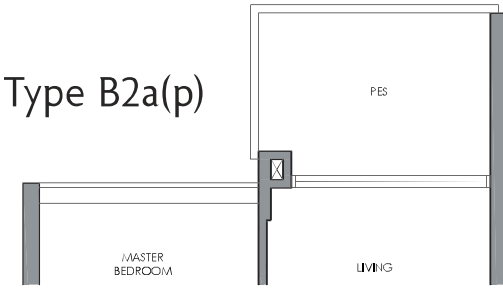
## Type B2a

60 sq m / 646 sq ft  
Inclusive of 6 sq m Balcony  
& 4 sq m AC Ledge

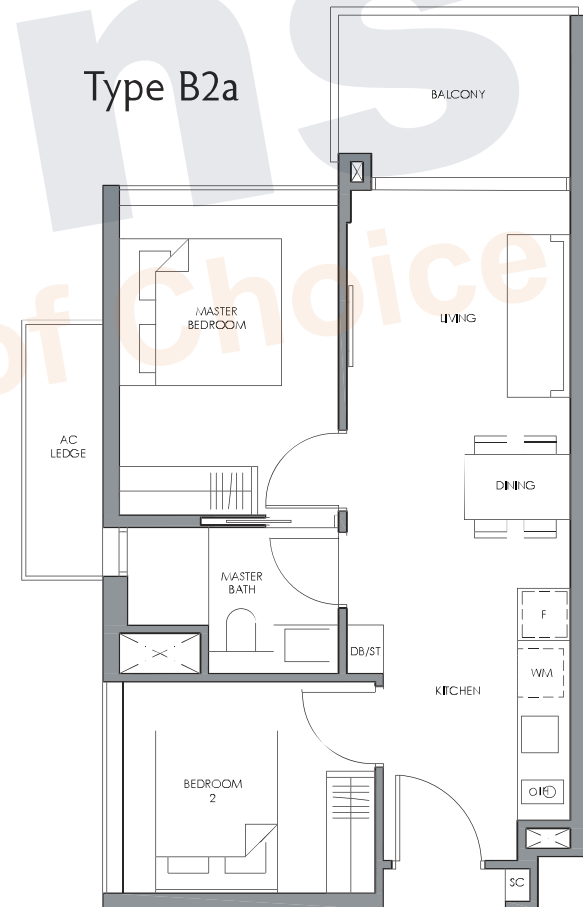
Block 8  
#02-27 to #10-27

Block 10  
#02-33 to #10-33

## Type B2a(p)

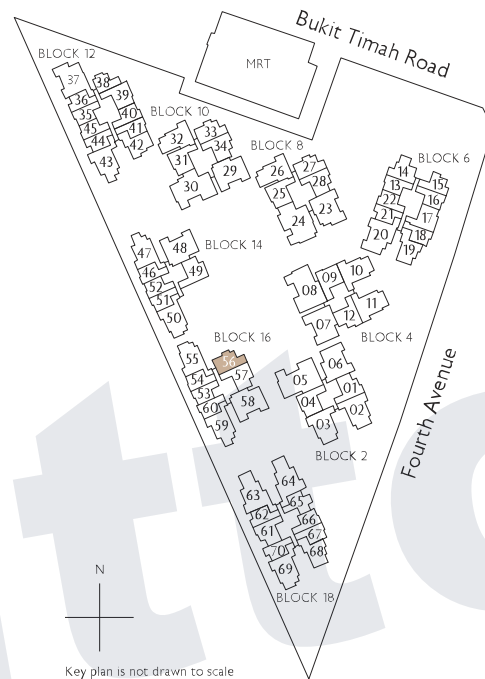


## Type B2a



All plans are subject to change as may be required or approved by the relevant authorities. All floor areas are approximate measurements only and are subject to final survey. The balcony shall not be enclosed except with the approved balcony screen. For an illustration of the approved balcony screen, please refer to the diagram annexed hereto as "Annexure 1"

# 2-Bedroom



Fridge  
Induction Hob  
Shoe Cabinet  
Washer cum Dryer  
Distribution Board / Store

F  
IH  
SC  
WM  
DB/ST

## Type B2b(p)

60 sq m / 646 sq ft  
Inclusive of 6 sq m PES  
& 4 sq m AC Ledge

Block 16  
#01-56



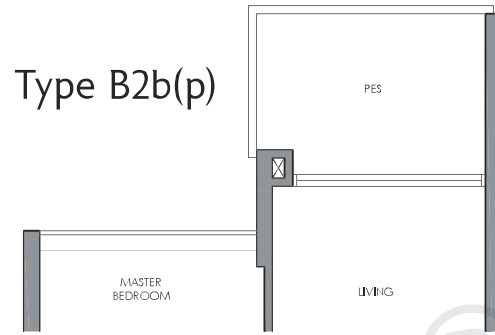
\* Mirror Image ^ High Ceiling

## Type B2b

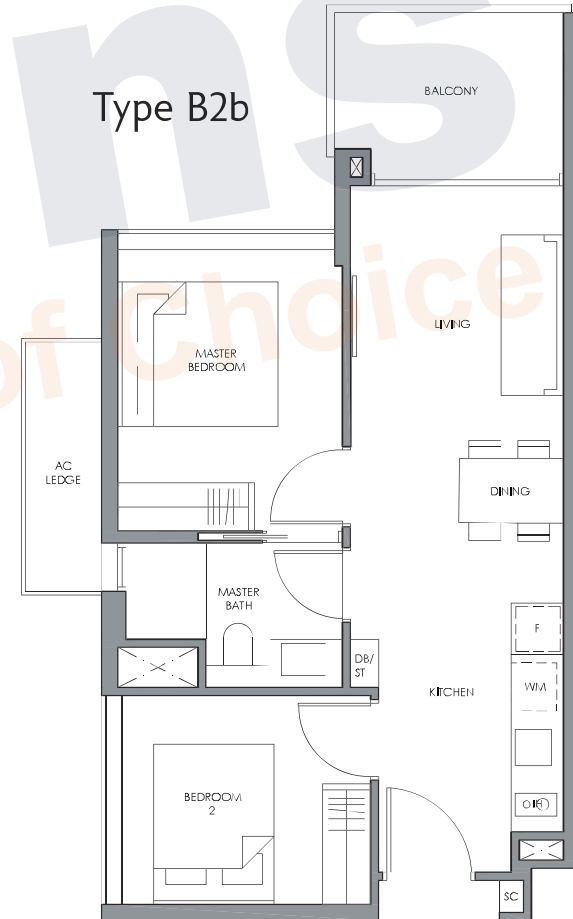
60 sq m / 646 sq ft  
Inclusive of 6 sq m Balcony  
& 4 sq m AC Ledge

Block 16  
#02-56 ^

## Type B2b(p)

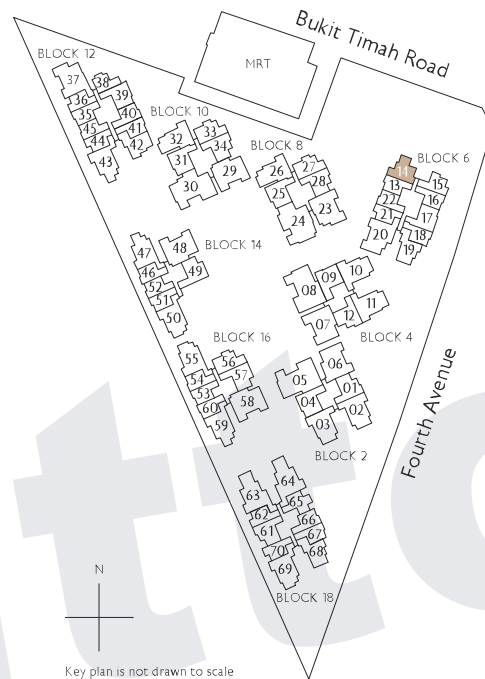


## Type B2b



All plans are subject to change as may be required or approved by the relevant authorities. All floor areas are approximate measurements only and are subject to final survey. The balcony shall not be enclosed except with the approved balcony screen. For an illustration of the approved balcony screen, please refer to the diagram annexed hereto as "Annexure 1"

# 2-Bedroom



Fridge  
Induction Hob  
Shoe Cabinet  
Washer cum Dryer  
Distribution Board / Store

F  
IH  
SC  
WM  
DB/ST

## Type B3(p)

60 sq m / 646 sq ft  
Inclusive of 6 sq m PES  
& 4 sq m AC Ledge

Block 6  
#01-14

0 1 3 5M

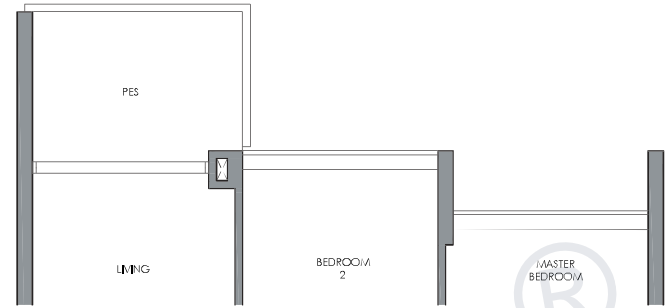
\* Mirror Image ^ High Ceiling

## Type B3

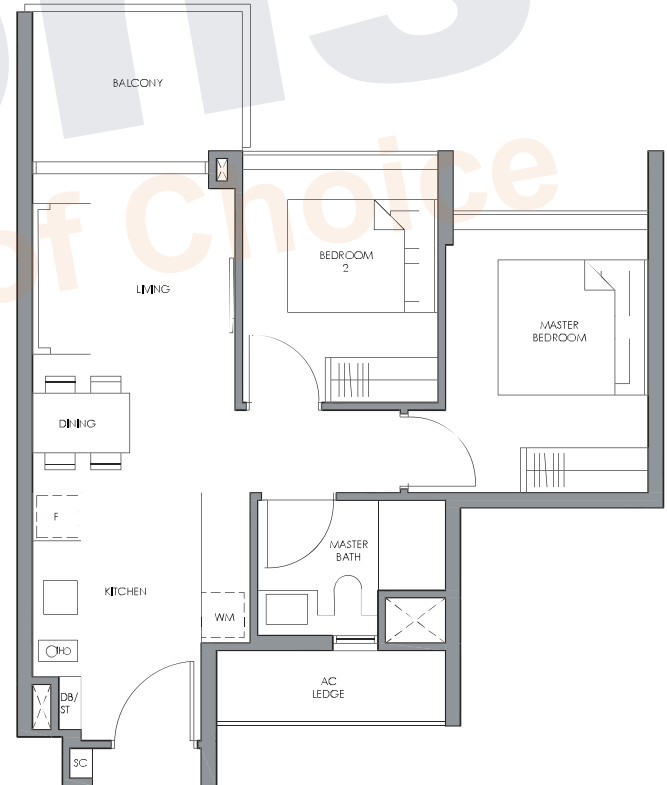
60 sq m / 646 sq ft  
Inclusive of 6 sq m Balcony  
& 4 sq m AC Ledge

Block 6  
#02-14 to #10-14

## Type B3(p)

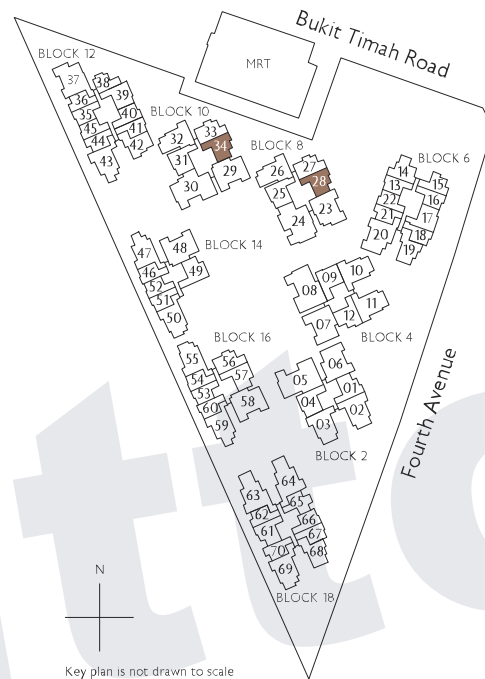


## Type B3



All plans are subject to change as may be required or approved by the relevant authorities. All floor areas are approximate measurements only and are subject to final survey. The balcony shall not be enclosed except with the approved balcony screen. For an illustration of the approved balcony screen, please refer to the diagram annexed hereto as "Annexure 1"

# 2-Bedroom Premium



Fridge  
Induction Hob  
Shoe Cabinet  
Washer cum Dryer  
Distribution Board / Store

F  
IH  
SC  
WM  
DB/ST

## Type BP1a(p)

64 sq m / 689 sq ft  
Inclusive of 6 sq m PES  
& 3 sq m AC Ledge

Block 8  
#01-28

Block 10  
#01-34

## Type BP1a

64 sq m / 689 sq ft  
Inclusive of 6 sq m Balcony  
& 3 sq m AC Ledge

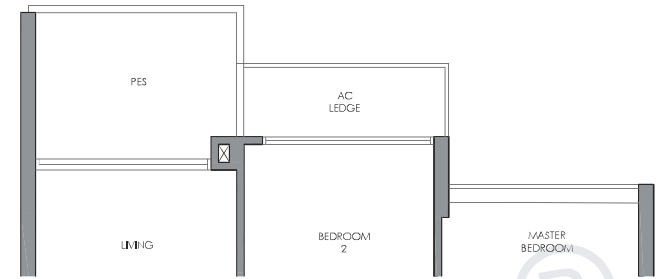
Block 8  
#02-28 to #10-28

Block 10  
#02-34 to #10-34

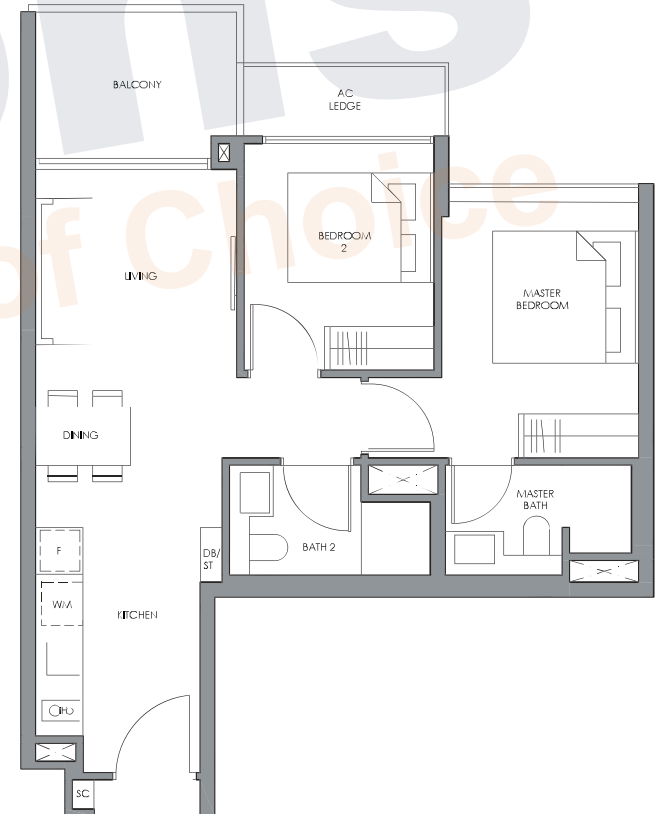
0 1 3 5M

\* Mirror Image ^ High Ceiling

## Type BP1a(p)



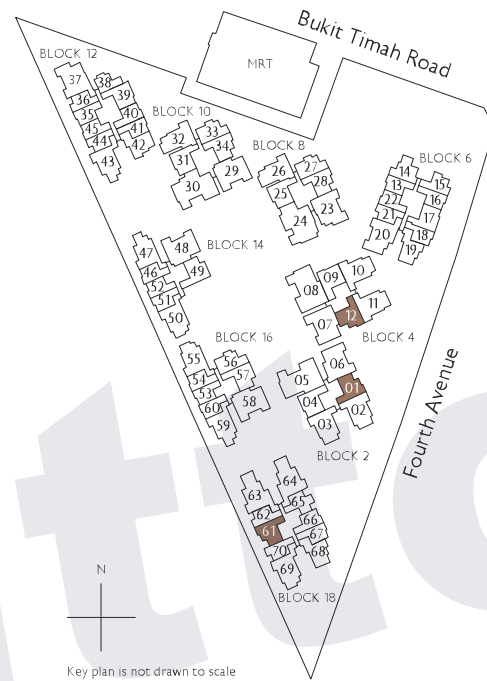
## Type BP1a



All plans are subject to change as may be required or approved by the relevant authorities. All floor areas are approximate measurements only and are subject to final survey. The balcony shall not be enclosed except with the approved balcony screen. For an illustration of the approved balcony screen, please refer to the diagram annexed hereto as "Annexure 1"



# 2-Bedroom Premium



- Fridge
- Induction Hob
- Shoe Cabinet
- Washer cum Dryer
- Distribution Board / Store

- F
- IH
- SC
- WM
- DB/ST

**Type BP1b(p)**  
64 sq m / 689 sq ft  
Inclusive of 6 sq m PES  
& 3 sq m AC Ledge

**Type BP1b**  
64 sq m / 689 sq ft  
Inclusive of 6 sq m Balcony  
& 3 sq m AC Ledge

Block 2  
#01-01 \*

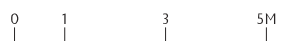
Block 2  
#02-01 to #06-01 \*

Block 4  
#01-12

Block 4  
#02-12 to #06-12

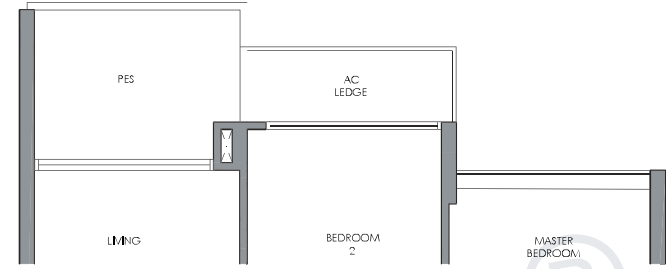
Block 18  
#01-61 \*

Block 18  
#02-61 to #06-61 \*

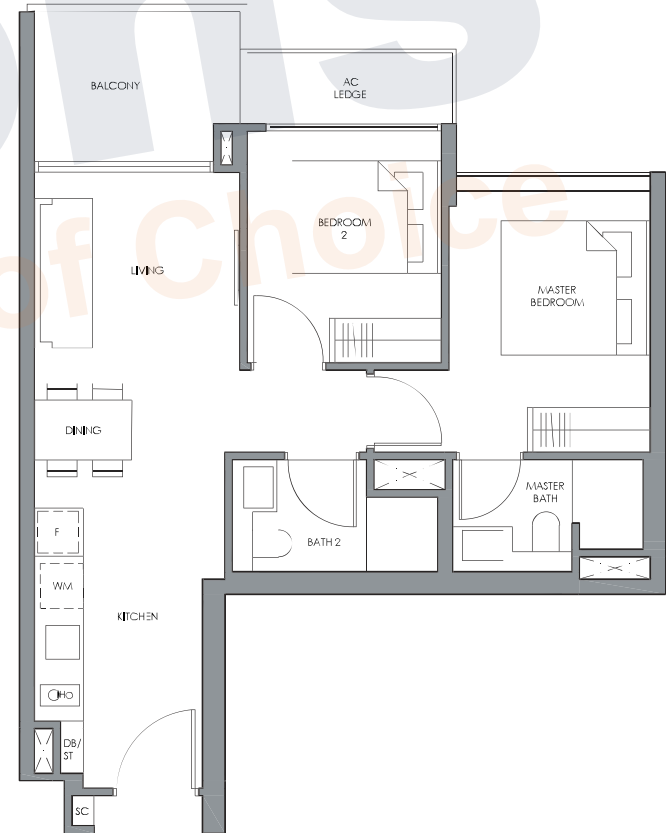


\* Mirror Image    ^ High Ceiling

Type BP1b(p)

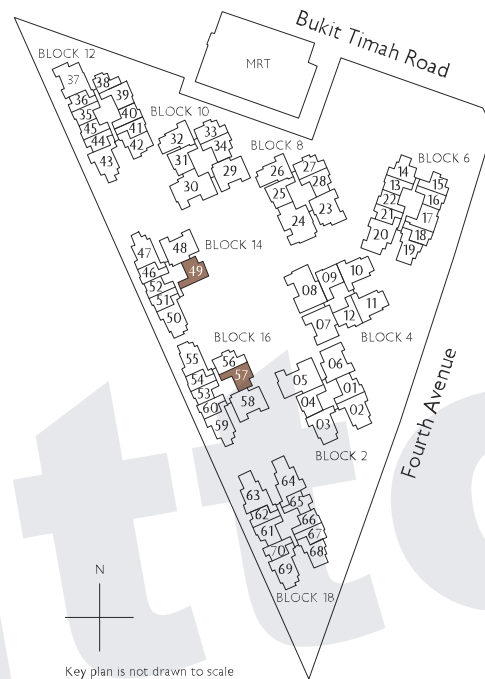


Type BP1b



All plans are subject to change as may be required or approved by the relevant authorities. All floor areas are approximate measurements only and are subject to final survey. The balcony shall not be enclosed except with the approved balcony screen. For an illustration of the approved balcony screen, please refer to the diagram annexed hereto as "Annexure 1"

# 2-Bedroom Premium



Fridge  
Induction Hob  
Shoe Cabinet  
Washer cum Dryer  
Distribution Board / Store

F  
IH  
SC  
WM  
DB/ST

## Type BP1c(p)

65 sq m / 700 sq ft  
Inclusive of 6 sq m PES  
& 3 sq m AC Ledge

Block 14  
#01-49 \*

Block 16  
#01-57

## Type BP1c

65 sq m / 700 sq ft  
Inclusive of 6 sq m Balcony  
& 3 sq m AC Ledge

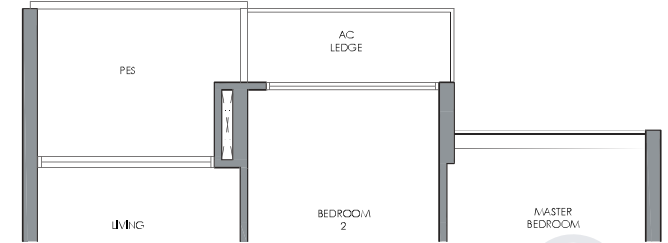
Block 14  
#02-49 \*^

Block 16  
#02-57 ^

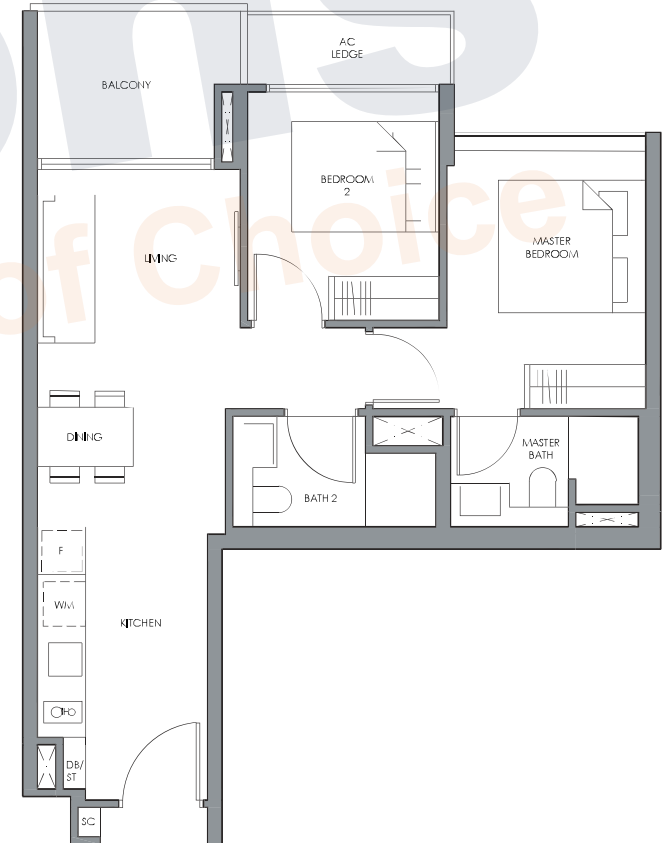
0 1 3 5M

\* Mirror Image ^ High Ceiling

## Type BP1c(p)

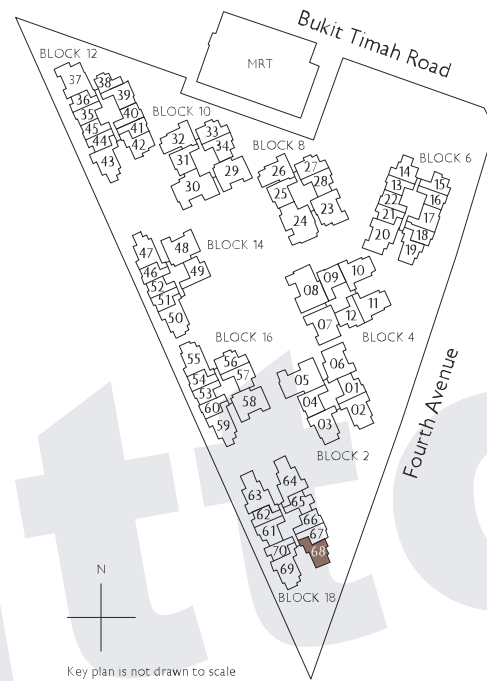


## Type BP1c



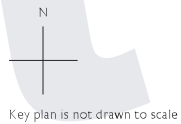
All plans are subject to change as may be required or approved by the relevant authorities. All floor areas are approximate measurements only and are subject to final survey. The balcony shall not be enclosed except with the approved balcony screen. For an illustration of the approved balcony screen, please refer to the diagram annexed hereto as "Annexure 1"

# 2-Bedroom Premium

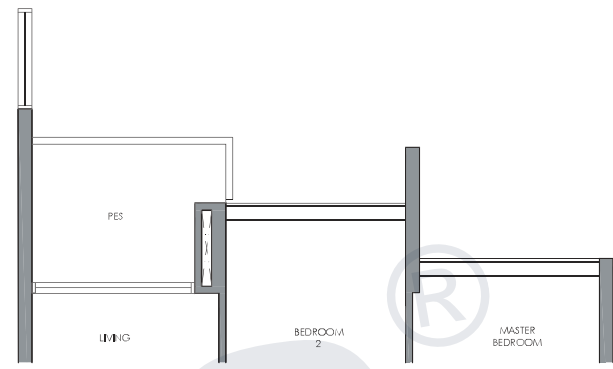


- Fridge
- Induction Hob
- Shoe Cabinet
- Washer cum Dryer
- Distribution Board / Store

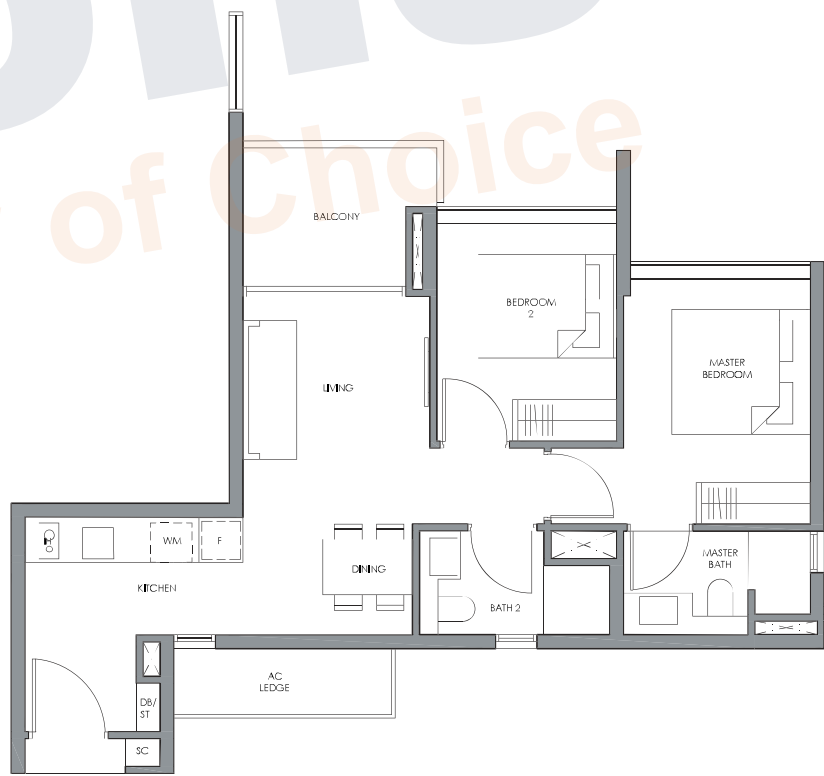
- F
- IH
- SC
- WM
- DB/ST



Type BP2(p)



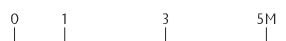
Type BP2



✿  
Type BP2(p)

66 sq m / 710 sq ft  
Inclusive of 6 sq m PES  
& 4 sq m AC Ledge

Block 18  
#01-68



\* Mirror Image ^ High Ceiling

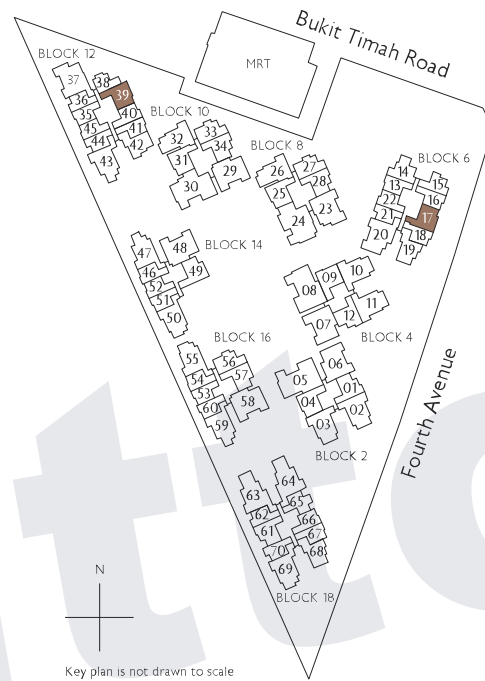
✿  
Type BP2

66 sq m / 710 sq ft  
Inclusive of 6 sq m Balcony  
& 4 sq m AC Ledge

Block 18  
#02-68 to #06-68

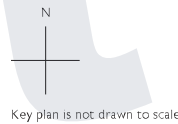
All plans are subject to change as may be required or approved by the relevant authorities. All floor areas are approximate measurements only and are subject to final survey. The balcony shall not be enclosed except with the approved balcony screen. For an illustration of the approved balcony screen, please refer to the diagram annexed hereto as "Annexure 1"

# 2-Bedroom Premium



- Fridge
- Induction Hob
- Shoe Cabinet
- Washer cum Dryer
- Distribution Board / Store

- F
- IH
- SC
- WM
- DB/ST



## Type BP3a(p)

66 sq m / 710 sq ft  
Inclusive of 6 sq m PES  
& 3 sq m AC Ledge

Block 6  
#01-17

Block 12  
#01-39 \*

## Type BP3a

66 sq m / 710 sq ft  
Inclusive of 6 sq m Balcony  
& 3 sq m AC Ledge

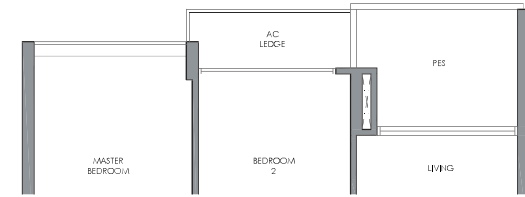
Block 6  
#02-17 to #06-17  
#07-17 to #10-17 (security screen)

Block 12  
#02-39 to #10-39 \*

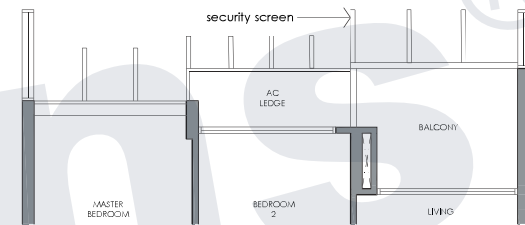


\* Mirror Image ^ High Ceiling

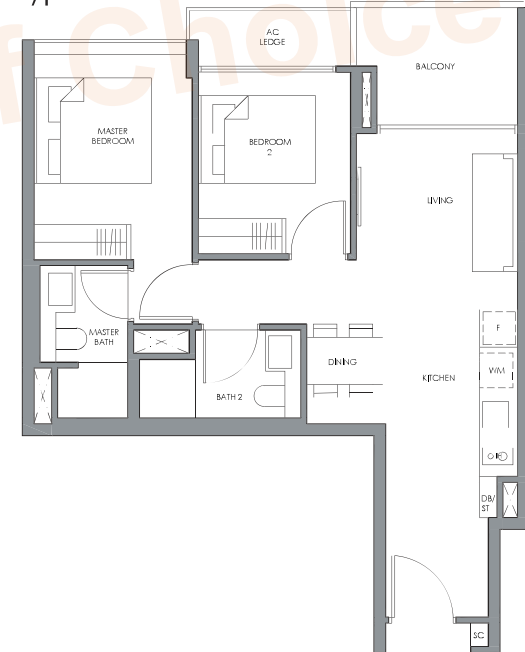
## Type BP3a(p)



## Type BP3a WITH SECURITY SCREEN

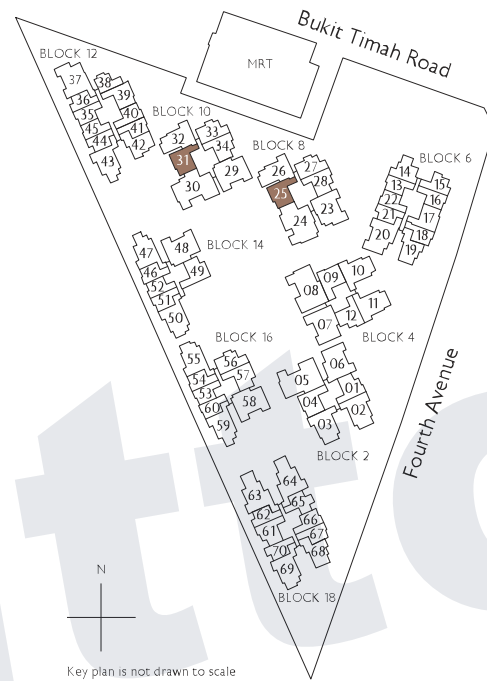


## Type BP3a

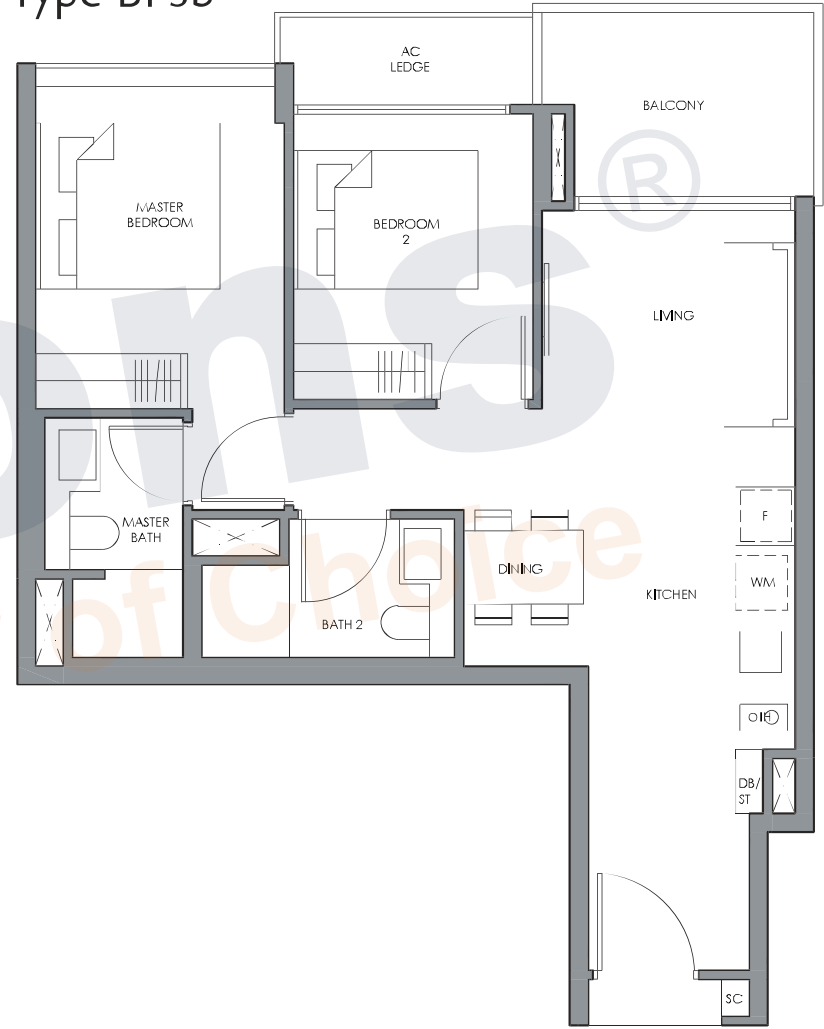


All plans are subject to change as may be required or approved by the relevant authorities. All floor areas are approximate measurements only and are subject to final survey. The balcony shall not be enclosed except with the approved balcony screen. For an illustration of the approved balcony screen, please refer to the diagram annexed hereto as "Annexure 1"

# 2-Bedroom Premium



## Type BP3b



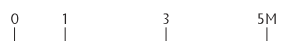
- Fridge
- Induction Hob
- Shoe Cabinet
- Washer cum Dryer
- Distribution Board / Store
- F
- IH
- SC
- WM
- DB/ST

### ✦ Type BP3b

66 sq m / 710 sq ft  
Inclusive of 6 sq m Balcony  
& 3 sq m AC Ledge

Block 8  
#02-25 to #10-25

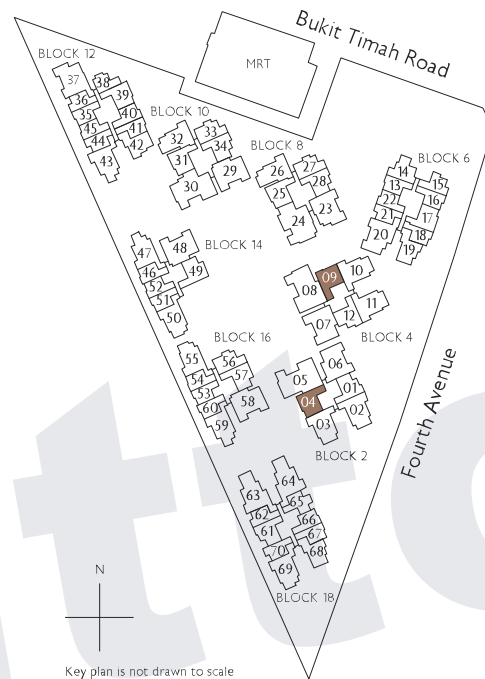
Block 10  
#02-31 to #10-31



\* Mirror Image ^ High Ceiling

All plans are subject to change as may be required or approved by the relevant authorities. All floor areas are approximate measurements only and are subject to final survey. The balcony shall not be enclosed except with the approved balcony screen. For an illustration of the approved balcony screen, please refer to the diagram annexed hereto as "Annexure 1"

# 2-Bedroom Premium



Fridge  
Induction Hob  
Shoe Cabinet  
Washer cum Dryer  
Distribution Board / Store

F  
IH  
SC  
WM  
DB/ST

N  
Key plan is not drawn to scale

## Type BP4(p)

66 sq m / 710 sq ft  
Inclusive of 6 sq m PES  
& 3 sq m AC Ledge

Block 2  
#01-04

Block 4  
#01-09 \*

## Type BP4

66 sq m / 710 sq ft  
Inclusive of 6 sq m Balcony  
& 3 sq m AC Ledge

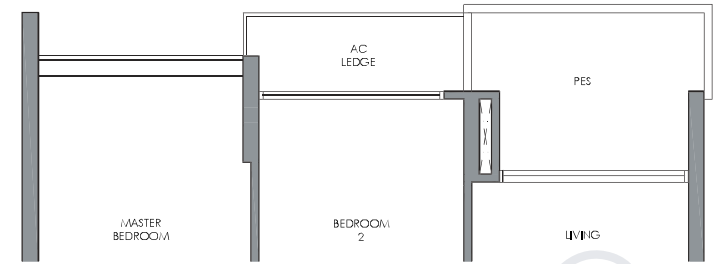
Block 2  
#02-04 to #06-04

Block 4  
#02-09 to #06-09 \*

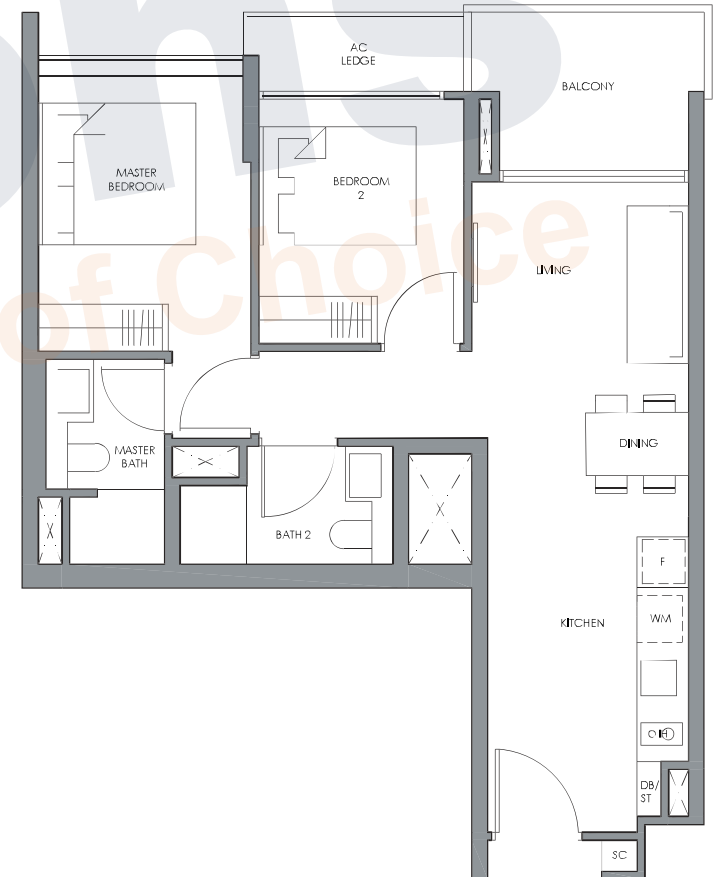
0 1 3 5M

\* Mirror Image ^ High Ceiling

## Type BP4(p)



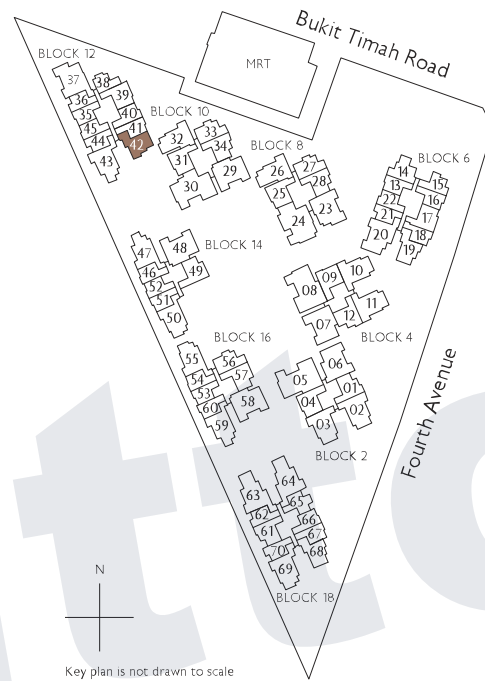
## Type BP4



All plans are subject to change as may be required or approved by the relevant authorities. All floor areas are approximate measurements only and are subject to final survey. The balcony shall not be enclosed except with the approved balcony screen. For an illustration of the approved balcony screen, please refer to the diagram annexed hereto as "Annexure 1"

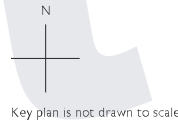


# 2-Bedroom Premium



Fridge  
Induction Hob  
Shoe Cabinet  
Washer cum Dryer  
Distribution Board / Store

F  
IH  
SC  
WM  
DB/ST



## Type BP6(p)

67 sq m / 721 sq ft  
Inclusive of 6 sq m PES  
& 4 sq m AC Ledge

Block 12  
#01-42

## Type BP6

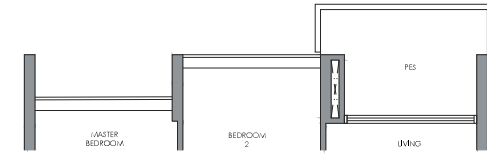
67 sq m / 721 sq ft  
Inclusive of 6 sq m Balcony  
& 4 sq m AC Ledge

Block 12  
#02-42 to #07-42  
#08-42 to #10-42 (security screen)

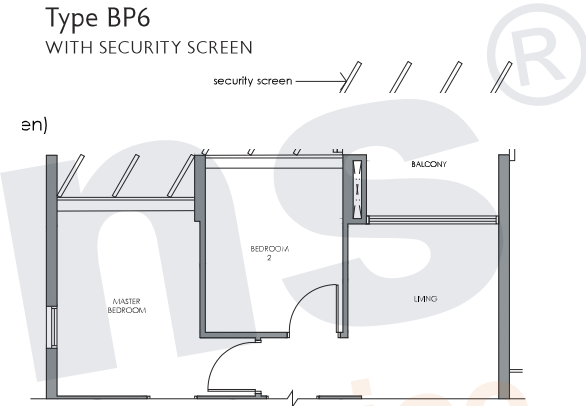


\* Mirror Image ^ High Ceiling

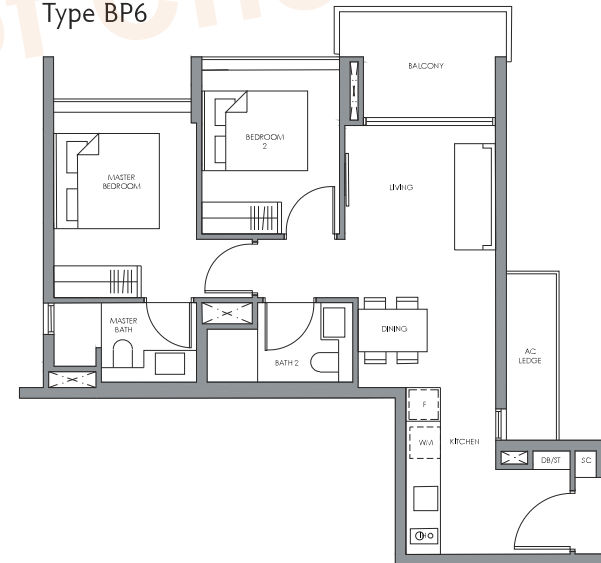
## Type BP6(p)



## Type BP6 WITH SECURITY SCREEN



## Type BP6



All plans are subject to change as may be required or approved by the relevant authorities. All floor areas are approximate measurements only and are subject to final survey. The balcony shall not be enclosed except with the approved balcony screen. For an illustration of the approved balcony screen, please refer to the diagram annexed hereto as "Annexure 1"



# 3-Bedroom



Fridge  
Gas Hob  
Shoe Cabinet  
Washer cum Dryer  
Distribution Board / Store

F  
GH  
SC  
WM  
DB/ST

N  
Key plan is not drawn to scale



## Type C1(p)

85 sq m / 915 sq ft  
Inclusive of 7 sq m PES  
& 5 sq m AC Ledge

Block 8  
#01-26

Block 10  
#01-32



## Type C1

85 sq m / 915 sq ft  
Inclusive of 7 sq m Balcony  
& 5 sq m AC Ledge

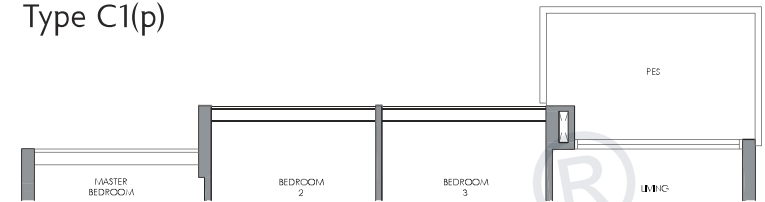
Block 8  
#02-26 to #10-26

Block 10  
#02-32 to #10-32

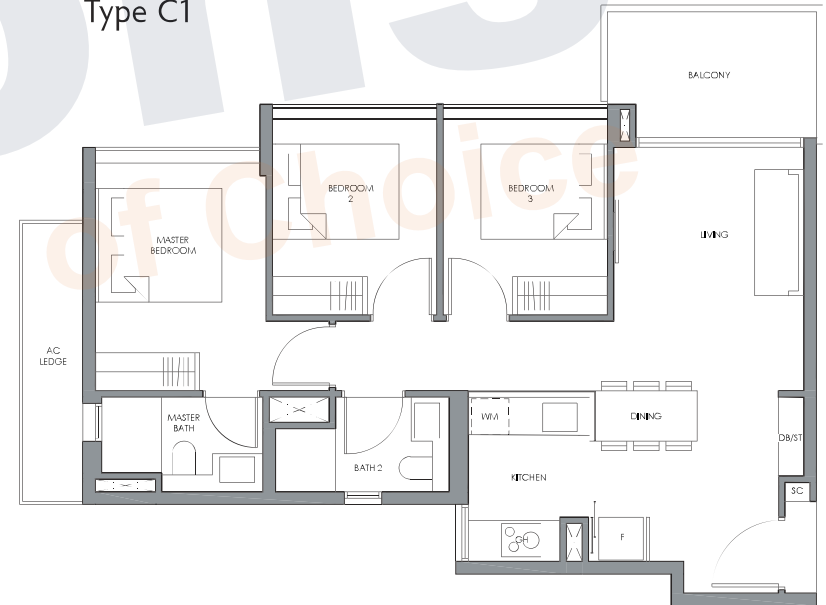
0 1 3 5M

\* Mirror Image ^ High Ceiling

## Type C1(p)

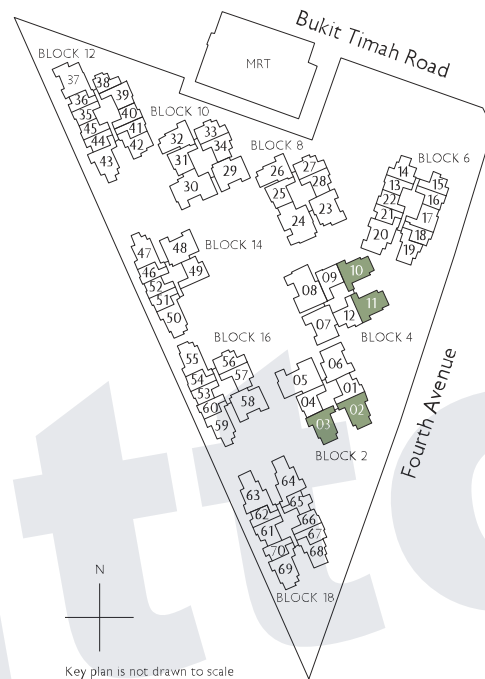


## Type C1



All plans are subject to change as may be required or approved by the relevant authorities. All floor areas are approximate measurements only and are subject to final survey. The balcony shall not be enclosed except with the approved balcony screen. For an illustration of the approved balcony screen, please refer to the diagram annexed hereto as "Annexure 1"

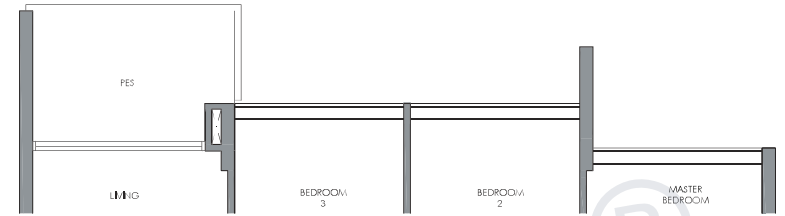
# 3-Bedroom



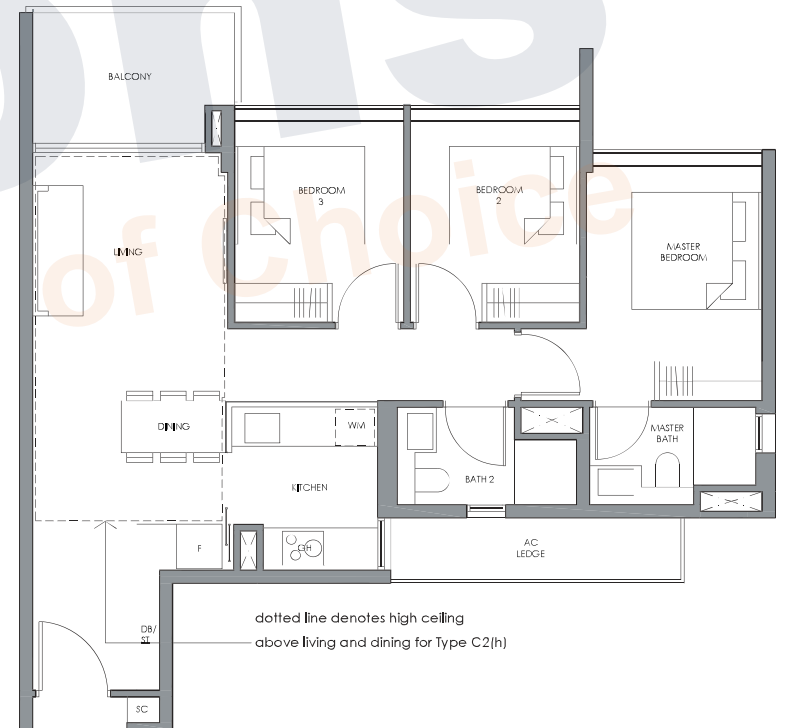
Fridge  
Gas Hob  
Shoe Cabinet  
Washer cum Dryer  
Distribution Board / Store

F  
GH  
SC  
WM  
DB/ST

Type C2(p)



Type C2  
Type C2(h)



✦  
Type C2(p)

88 sq m / 947 sq ft  
Inclusive of 7 sq m PES  
& 5 sq m AC Ledge

Block 2  
#01-02  
#01-03 \*

Block 4  
#01-10  
#01-11 \*

✦  
Type C2

88 sq m / 947 sq ft  
Inclusive of 7 sq m Balcony  
& 5 sq m AC Ledge

Block 2  
#02-02 to #05-02  
#02-03 to #05-03 \*

Block 4  
#02-10 to #05-10  
#02-11 to #06-11 \*

✦  
Type C2(h)

88 sq m / 947 sq ft  
Inclusive of 7 sq m Balcony  
& 5 sq m AC Ledge

Block 2  
#06-02  
#06-03 \*

Block 4  
#06-10



\* Mirror Image ^ High Ceiling

All plans are subject to change as may be required or approved by the relevant authorities. All floor areas are approximate measurements only and are subject to final survey. The balcony shall not be enclosed except with the approved balcony screen. For an illustration of the approved balcony screen, please refer to the diagram annexed hereto as "Annexure 1"

# 3-Bedroom



Fridge  
Gas Hob  
Shoe Cabinet  
Washer cum Dryer  
Distribution Board / Store

F  
GH  
SC  
WM  
DB/ST

## Type C3(p)

89 sq m / 958 sq ft  
Inclusive of 7 sq m PES  
& 5 sq m AC Ledge

Block 14  
#01-50 \*

Block 16  
#01-55

## Type C3

89 sq m / 958 sq ft  
Inclusive of 7 sq m Balcony  
& 5 sq m AC Ledge

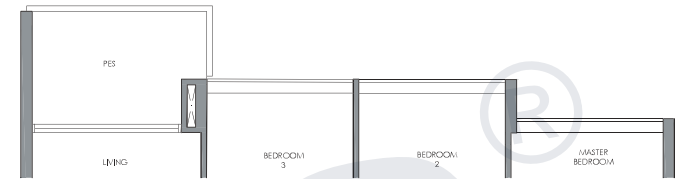
Block 14  
#02-50 \*^

Block 16  
#02-55 ^

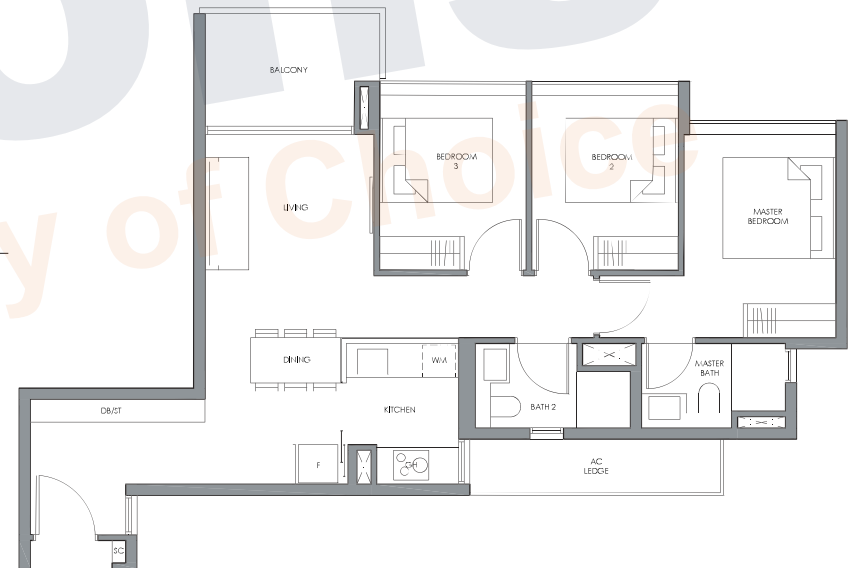
0 1 3 5M

\* Mirror Image ^ High Ceiling

## Type C3(p)

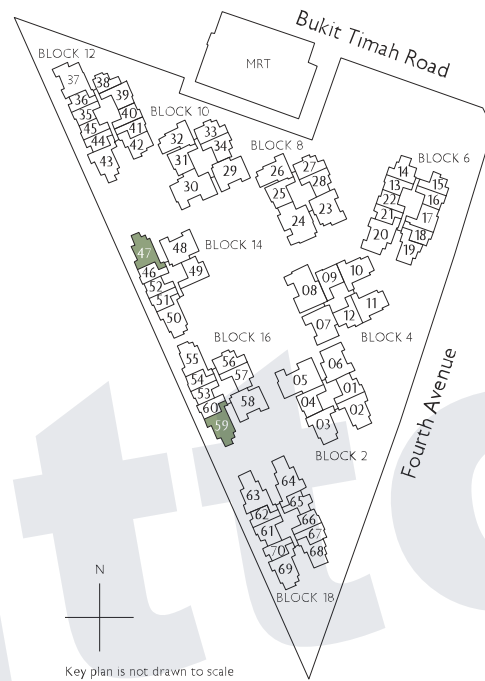


## Type C3



All plans are subject to change as may be required or approved by the relevant authorities. All floor areas are approximate measurements only and are subject to final survey. The balcony shall not be enclosed except with the approved balcony screen. For an illustration of the approved balcony screen, please refer to the diagram annexed hereto as "Annexure 1"

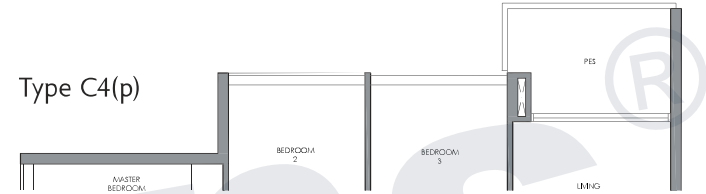
# 3-Bedroom



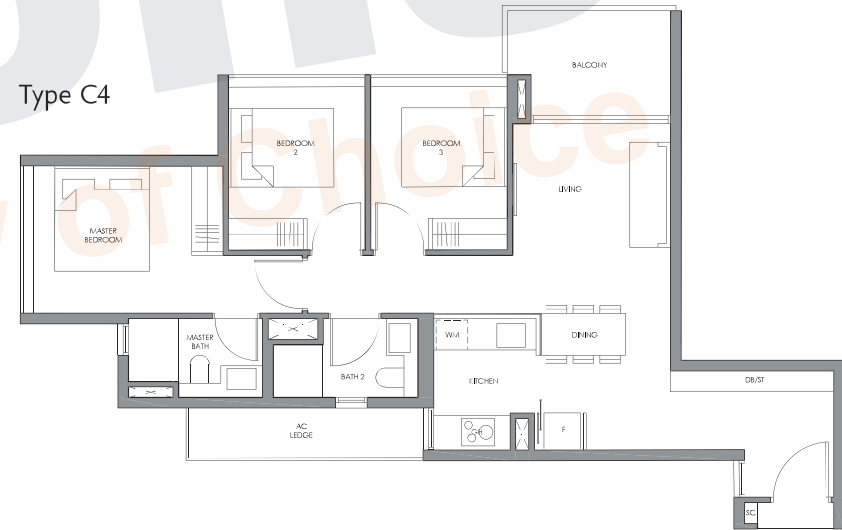
Fridge  
Gas Hob  
Shoe Cabinet  
Washer cum Dryer  
Distribution Board / Store

F  
GH  
SC  
WM  
DB/ST

Type C4(p)



Type C4



Type C4(p)

89 sq m / 958 sq ft  
Inclusive of 7 sq m PES  
& 5 sq m AC Ledge

Block 14  
#01-47 \*

Block 16  
#01-59

Type C4

89 sq m / 958 sq ft  
Inclusive of 7 sq m Balcony  
& 5 sq m AC Ledge

Block 14  
#02-47 \*^

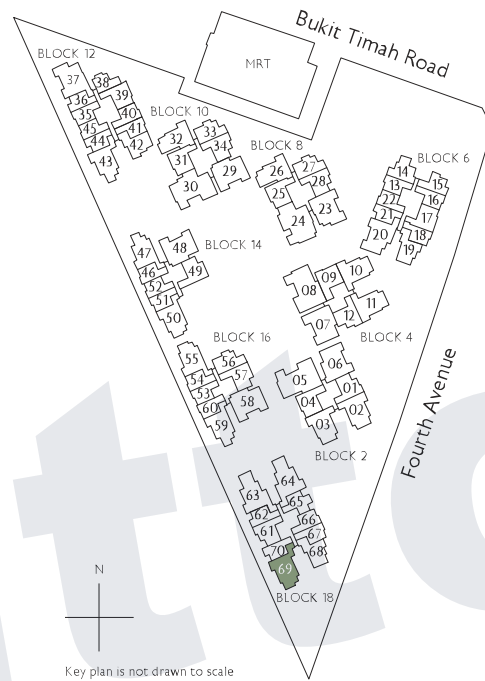
Block 16  
#02-59 ^



\* Mirror Image    ^ High Ceiling

All plans are subject to change as may be required or approved by the relevant authorities. All floor areas are approximate measurements only and are subject to final survey. The balcony shall not be enclosed except with the approved balcony screen. For an illustration of the approved balcony screen, please refer to the diagram annexed hereto as "Annexure 1"

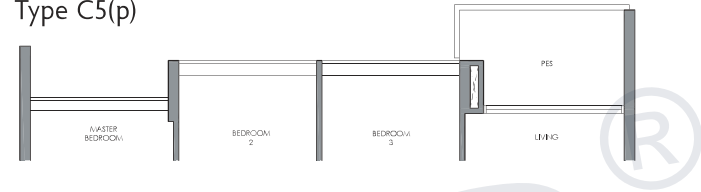
# 3-Bedroom



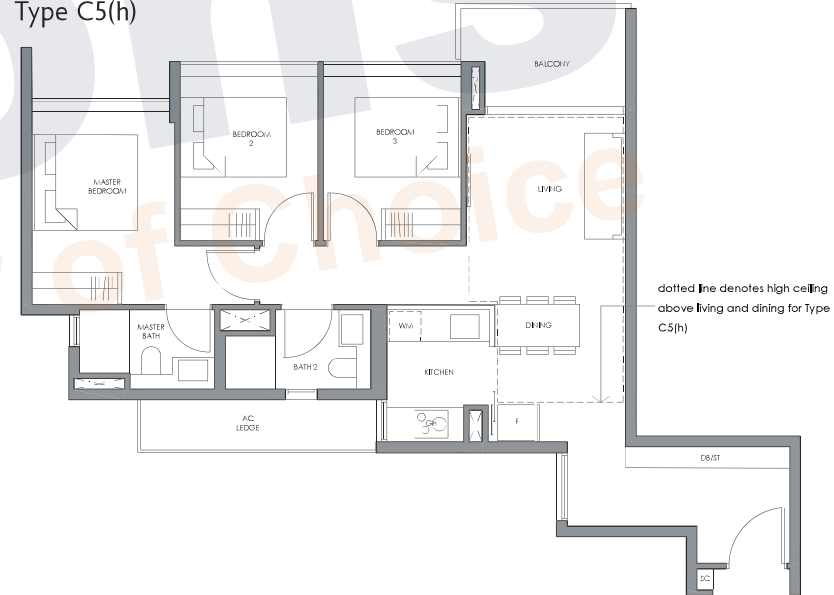
Fridge  
Gas Hob  
Shoe Cabinet  
Washer cum Dryer  
Distribution Board / Store

F  
GH  
SC  
WM  
DB/ST

Type C5(p)



Type C5  
Type C5(h)



dotted line denotes high ceiling above living and dining for Type C5(h)

Type C5(p)

90 sq m / 969 sq ft  
Inclusive of 6 sq m PES  
& 5 sq m AC Ledge

Block 18  
#01-69

Type C5

90 sq m / 969 sq ft  
Inclusive of 6 sq m Balcony  
& 5 sq m AC Ledge

Block 18  
#02-69 to #05-69

Type C5(h)

90 sq m / 969 sq ft  
Inclusive of 6 sq m Balcony  
& 5 sq m AC Ledge

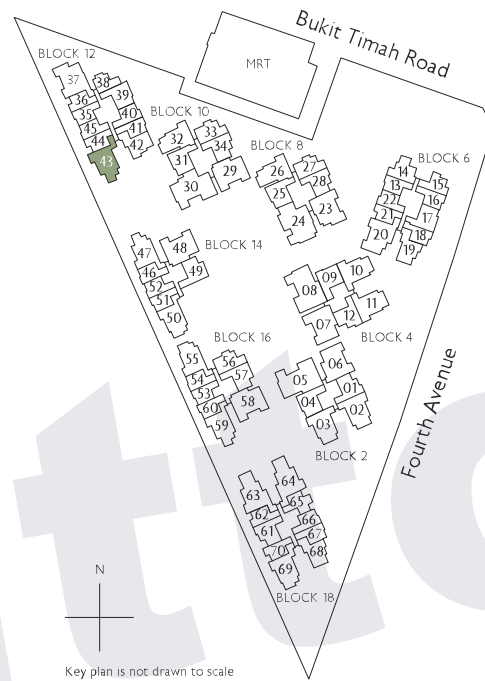
Block 18  
#06-69



\* Mirror Image ^ High Ceiling

All plans are subject to change as may be required or approved by the relevant authorities. All floor areas are approximate measurements only and are subject to final survey. The balcony shall not be enclosed except with the approved balcony screen. For an illustration of the approved balcony screen, please refer to the diagram annexed hereto as "Annexure 1"

# 3-Bedroom



Fridge  
Gas Hob  
Shoe Cabinet  
Washer cum Dryer  
Distribution Board / Store

F  
GH  
SC  
WM  
DB/ST



## Type C6(p)

90 sq m / 969 sq ft  
Inclusive of 7 sq m PES  
& 5 sq m AC Ledge

Block 12  
#01-43

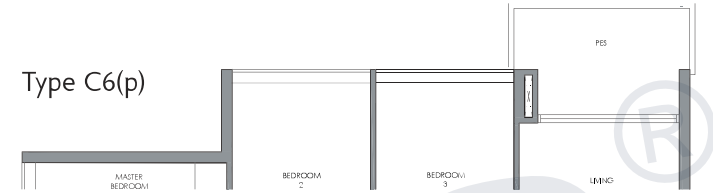


## Type C6

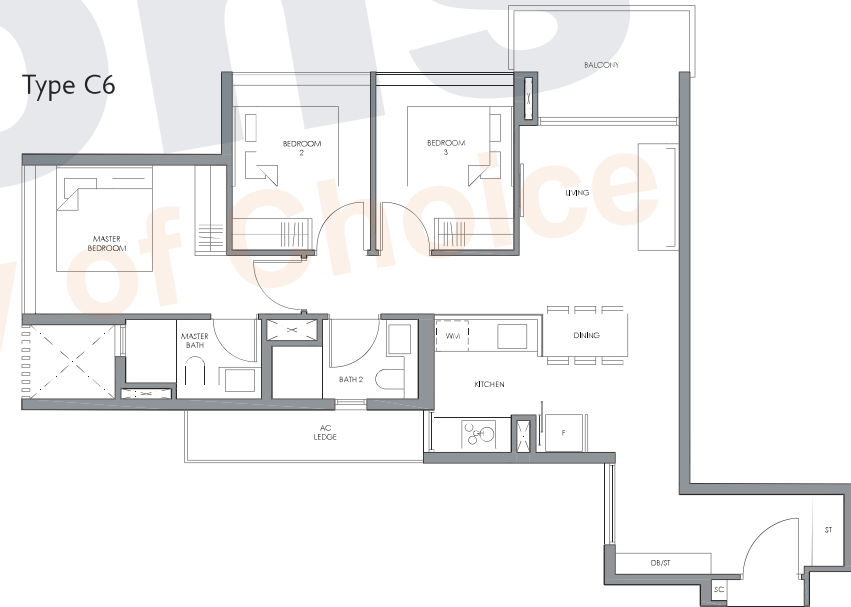
90 sq m / 969 sq ft  
Inclusive of 7 sq m Balcony  
& 5 sq m AC Ledge

Block 12  
#02-43 to #06-43

Type C6(p)



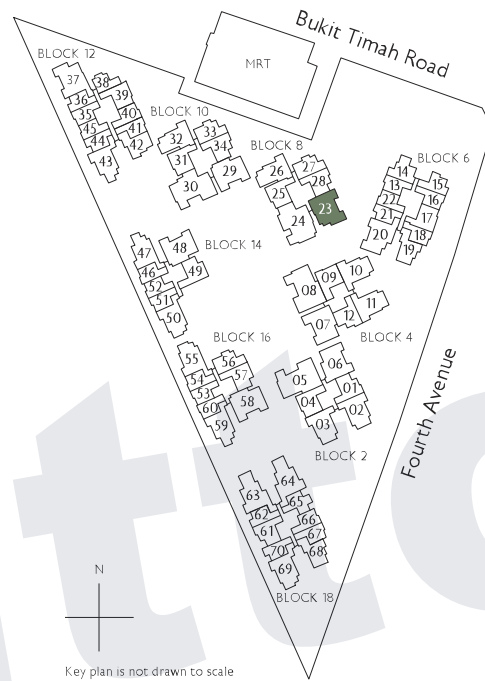
Type C6



\* Mirror Image ^ High Ceiling

All plans are subject to change as may be required or approved by the relevant authorities. All floor areas are approximate measurements only and are subject to final survey. The balcony shall not be enclosed except with the approved balcony screen. For an illustration of the approved balcony screen, please refer to the diagram annexed hereto as "Annexure 1"

# 3-Bedroom + Study



Fridge  
Gas Hob  
Shoe Cabinet  
Washer cum Dryer  
Distribution Board / Store

F  
GH  
SC  
WM  
DB/ST

## Type CS1(p)



## Type CS1



## Type CS1(p)

100 sq m / 1076 sq ft  
Inclusive of 13 sq m PES  
& 5 sq m AC Ledge

Block 8  
#01-23



## Type CS1

100 sq m / 1076 sq ft  
Inclusive of 13 sq m Balcony  
& 5 sq m AC Ledge

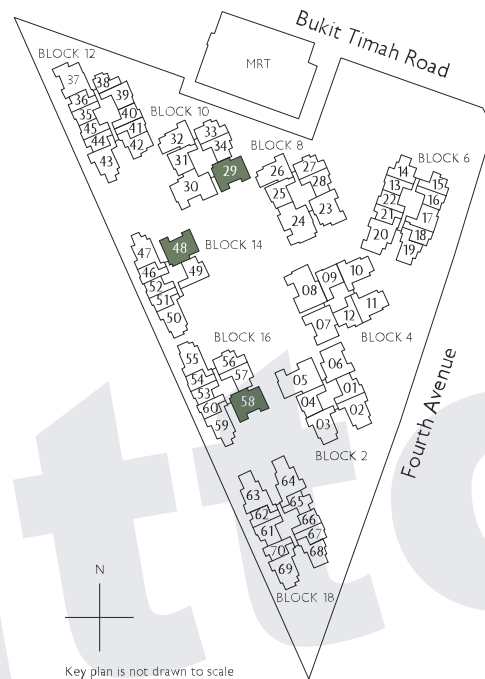
Block 8  
#02-23 to #10-23



\* Mirror Image ^ High Ceiling

All plans are subject to change as may be required or approved by the relevant authorities. All floor areas are approximate measurements only and are subject to final survey. The balcony shall not be enclosed except with the approved balcony screen. For an illustration of the approved balcony screen, please refer to the diagram annexed hereto as "Annexure 1"

# 3-Bedroom + Study



Fridge  
Gas Hob  
Shoe Cabinet  
Washer cum Dryer  
Distribution Board / Store

F  
GH  
SC  
WM  
DB/ST

## Type CS2(p)

103 sq m / 1109 sq ft  
Inclusive of 15 sq m PES  
& 5 sq m AC Ledge

Block 10  
#01-29

Block 14  
#01-48 \*

Block 16  
#01-58

## Type CS2

103 sq m / 1109 sq ft  
Inclusive of 15 sq m Balcony  
& 5 sq m AC Ledge

Block 10  
#02-29 to #07-29  
#08-29 to #10-29 (security screen)

Block 14  
#02-48 \*^

Block 16  
#02-58 ^

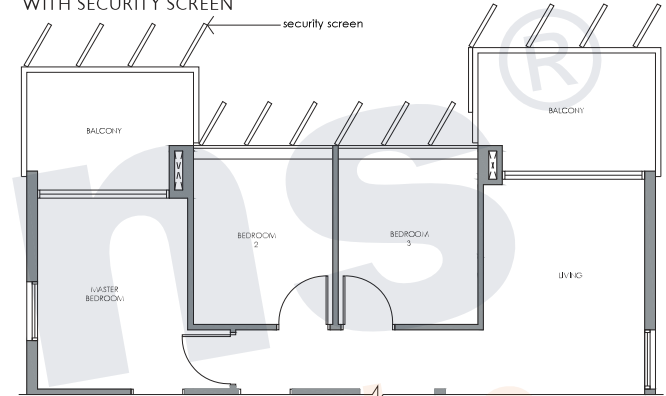


\* Mirror Image ^ High Ceiling

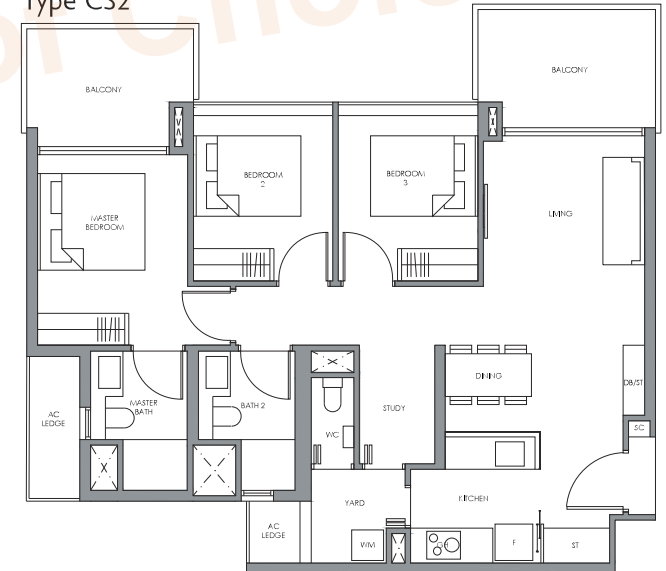
## Type CS2(p)



## Type CS2 WITH SECURITY SCREEN



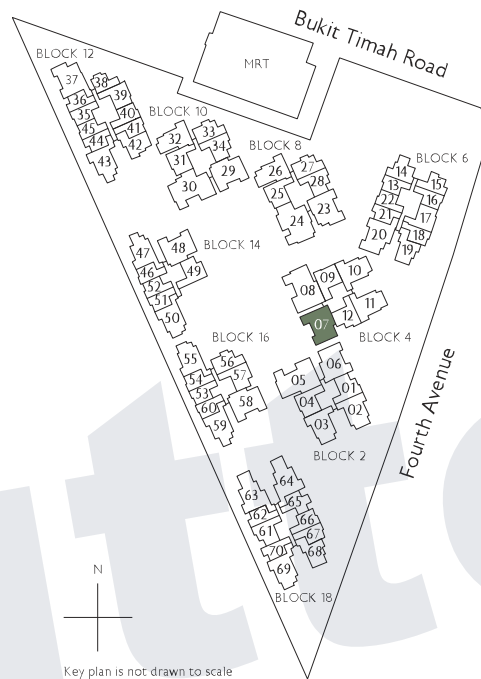
## Type CS2



All plans are subject to change as may be required or approved by the relevant authorities. All floor areas are approximate measurements only and are subject to final survey. The balcony shall not be enclosed except with the approved balcony screen. For an illustration of the approved balcony screen, please refer to the diagram annexed hereto as "Annexure 1"



# 3-Bedroom + Study



Fridge  
Gas Hob  
Shoe Cabinet  
Washer cum Dryer  
Distribution Board / Store

F  
GH  
SC  
WM  
DB/ST

## Type CS3(p)

105 sq m / 1130 sq ft  
Inclusive of 16 sq m PES  
& 5 sq m AC Ledge

Block 4  
#01-07

## Type CS3

105 sq m / 1130 sq ft  
Inclusive of 16 sq m Balcony  
& 5 sq m AC Ledge

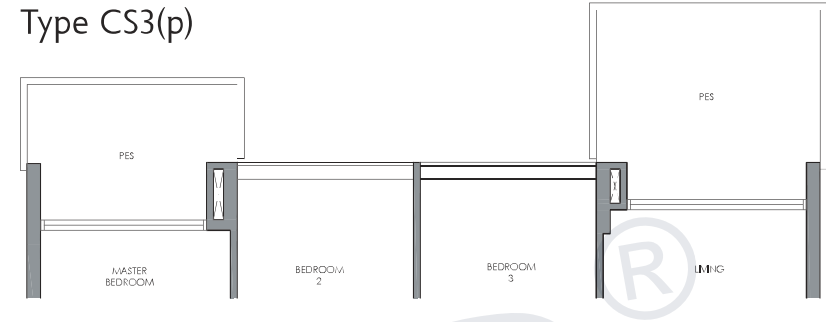
Block 4  
#02-07 to #05-07

## Type CS3(h)

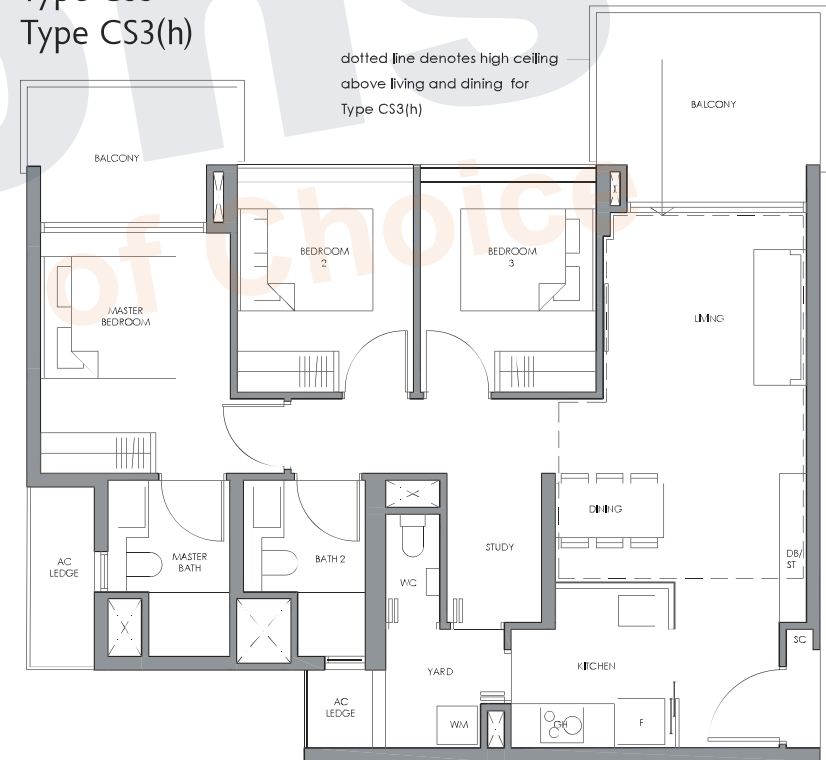
105 sq m / 1130 sq ft  
Inclusive of 16 sq m Balcony  
& 5 sq m AC Ledge

Block 4  
#06-07

### Type CS3(p)



### Type CS3 Type CS3(h)

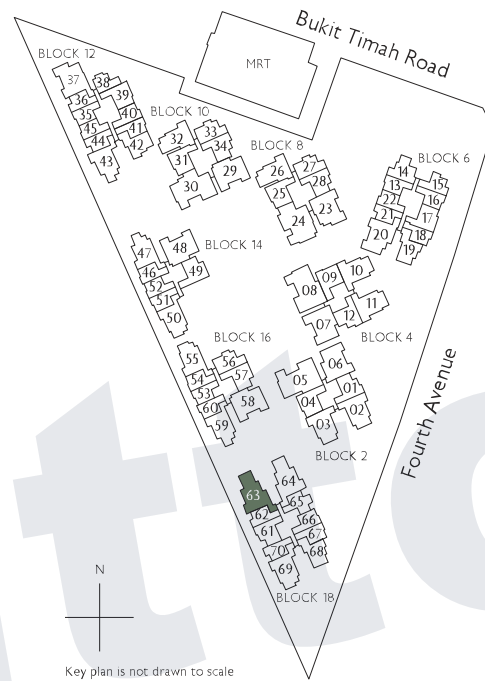


0 1 3 5M

\* Mirror Image ^ High Ceiling

All plans are subject to change as may be required or approved by the relevant authorities. All floor areas are approximate measurements only and are subject to final survey. The balcony shall not be enclosed except with the approved balcony screen. For an illustration of the approved balcony screen, please refer to the diagram annexed hereto as "Annexure 1"

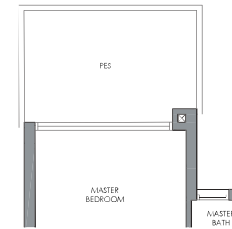
# 3-Bedroom + Study



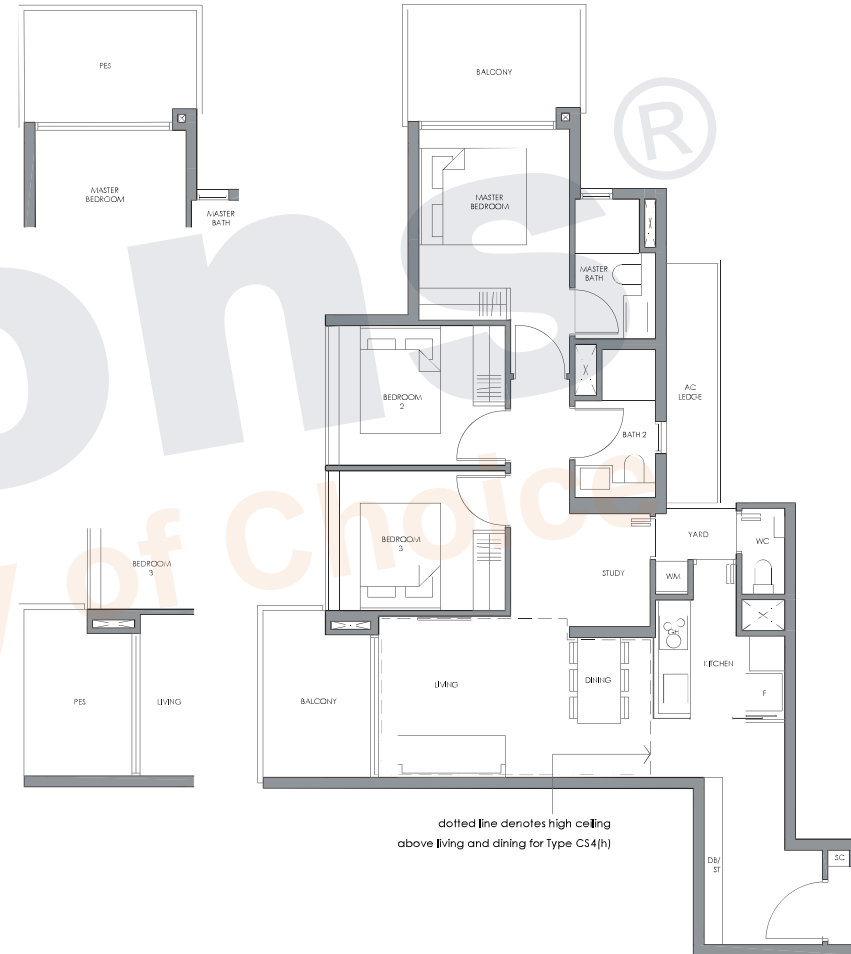
Fridge  
Gas Hob  
Shoe Cabinet  
Washer cum Dryer  
Distribution Board / Store

F  
GH  
SC  
WM  
DB/ST

Type CS4a(p)



Type CS4a  
Type CS4a(h)



Type CS4a(p)

103 sq m / 1109 sq ft  
Inclusive of 14 sq m PES  
& 5 sq m AC Ledge

Block 18  
#01-63



Type CS4a

103 sq m / 1109 sq ft  
Inclusive of 14 sq m Balcony  
& 5 sq m AC Ledge

Block 18  
#02-63 to #05-63



Type CS4a(h)

103 sq m / 1109 sq ft  
Inclusive of 14 sq m Balcony  
& 5 sq m AC Ledge

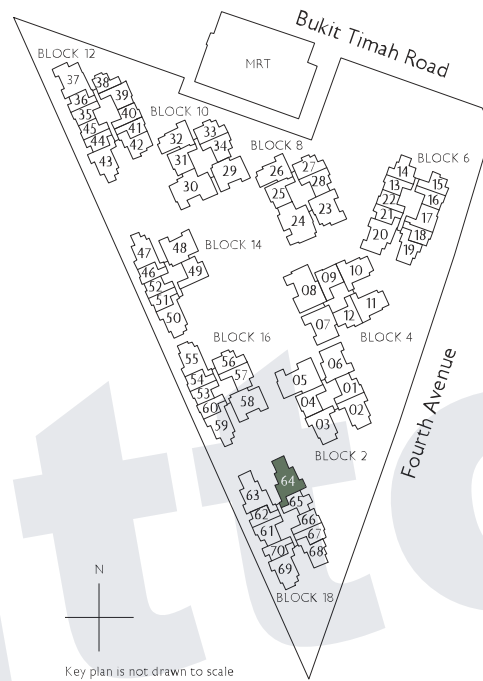
Block 18  
#06-63

0 1 3 5M

\* Mirror Image ^ High Ceiling

All plans are subject to change as may be required or approved by the relevant authorities. All floor areas are approximate measurements only and are subject to final survey. The balcony shall not be enclosed except with the approved balcony screen. For an illustration of the approved balcony screen, please refer to the diagram annexed hereto as "Annexure 1"

# 3-Bedroom + Study



Fridge  
Gas Hob  
Shoe Cabinet  
Washer cum Dryer  
Distribution Board / Store

F  
GH  
SC  
WM  
DB/ST

## Type CS4b(p)

103 sq m / 1109 sq ft  
Inclusive of 14 sq m PES  
& 5 sq m AC Ledge

Block 18  
#01-64

## Type CS4b

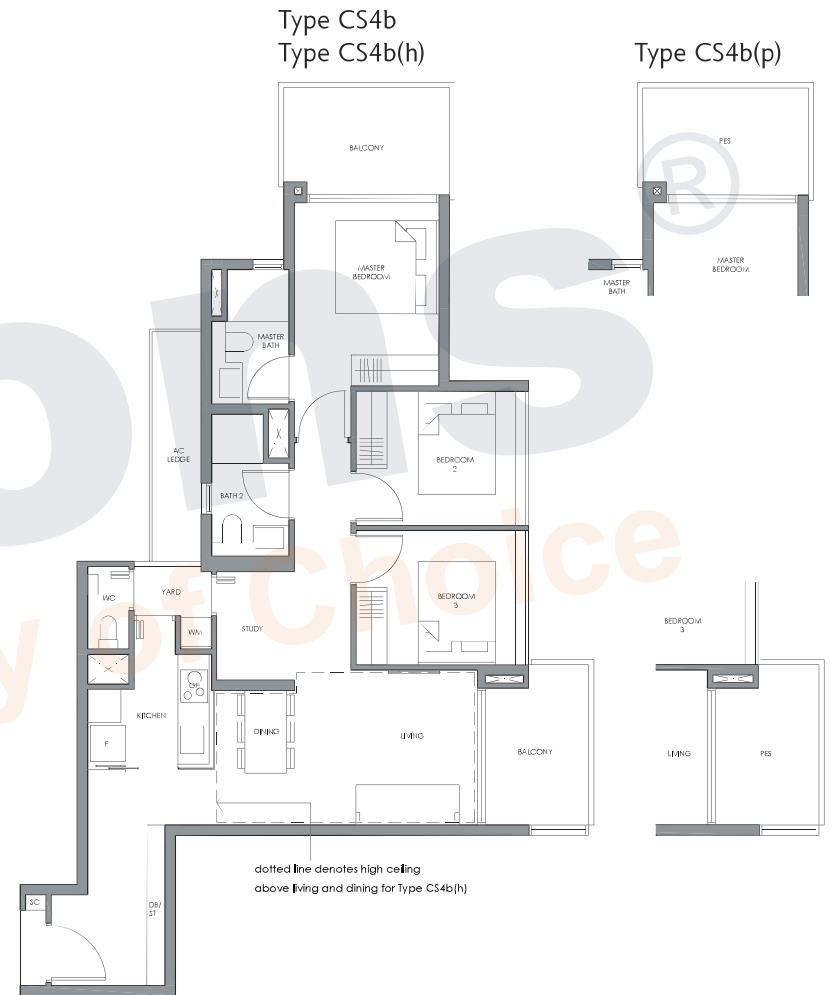
103 sq m / 1109 sq ft  
Inclusive of 14 sq m Balcony  
& 5 sq m AC Ledge

Block 18  
#02-64 to #05-64

## Type CS4b(h)

103 sq m / 1109 sq ft  
Inclusive of 14 sq m Balcony  
& 5 sq m AC Ledge

Block 18  
#06-64

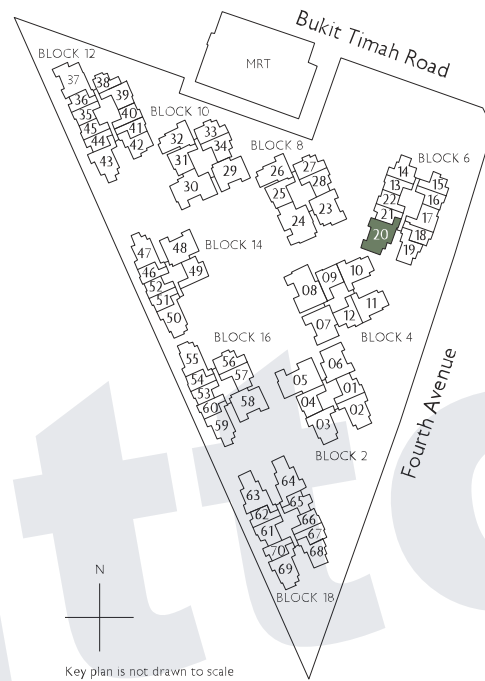


0 1 3 5M

\* Mirror Image ^ High Ceiling

All plans are subject to change as may be required or approved by the relevant authorities. All floor areas are approximate measurements only and are subject to final survey. The balcony shall not be enclosed except with the approved balcony screen. For an illustration of the approved balcony screen, please refer to the diagram annexed hereto as "Annexure 1"

# 3-Bedroom + Study



Fridge  
Gas Hob  
Shoe Cabinet  
Washer cum Dryer  
Distribution Board / Store

F  
GH  
SC  
WM  
DB/ST

## Type CS5(p)

103 sq m / 1109 sq ft  
Inclusive of 13 sq m PES  
& 6 sq m AC Ledge

Block 6  
#01-20

## Type CS5

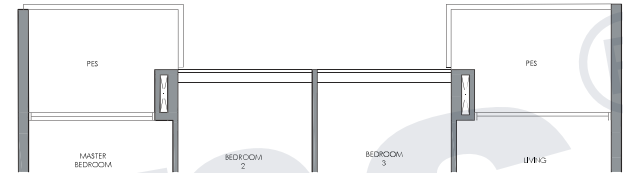
103 sq m / 1109 sq ft  
Inclusive of 13 sq m Balcony  
& 6 sq m AC Ledge

Block 6  
#02-20 to #10-20

0 1 3 5M

\* Mirror Image ^ High Ceiling

Type CS5(p)

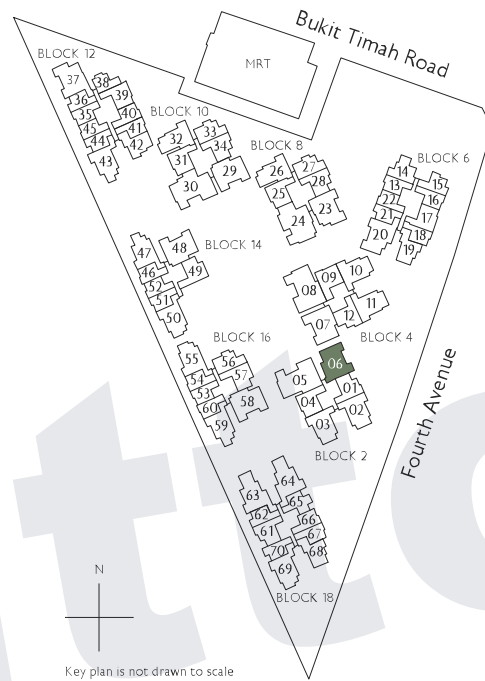


Type CS5



All plans are subject to change as may be required or approved by the relevant authorities. All floor areas are approximate measurements only and are subject to final survey. The balcony shall not be enclosed except with the approved balcony screen. For an illustration of the approved balcony screen, please refer to the diagram annexed hereto as "Annexure 1"

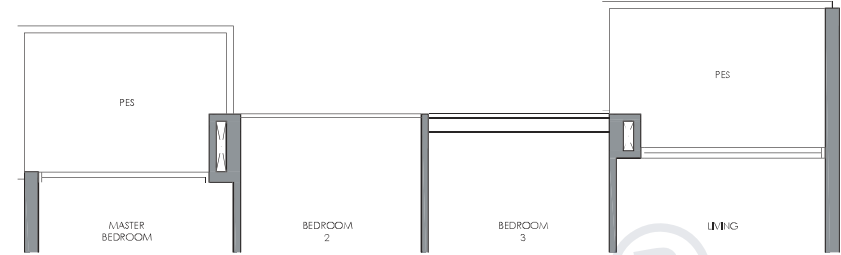
# 3-Bedroom + Study



Fridge  
Gas Hob  
Shoe Cabinet  
Washer cum Dryer  
Distribution Board / Store

F  
GH  
SC  
WM  
DB/ST

## Type CS6(p)



## Type CS6 Type CS6(h)



✦  
**Type CS6(p)**

103 sq m / 1109 sq ft  
Inclusive of 13 sq m PES  
& 5 sq m AC Ledge

Block 2  
#01-06

✦  
**Type CS6**

103 sq m / 1109 sq ft  
Inclusive of 13 sq m Balcony  
& 5 sq m AC Ledge

Block 2  
#02-06 to #05-06

✦  
**Type CS6(h)**

103 sq m / 1109 sq ft  
Inclusive of 13 sq m Balcony  
& 5 sq m AC Ledge

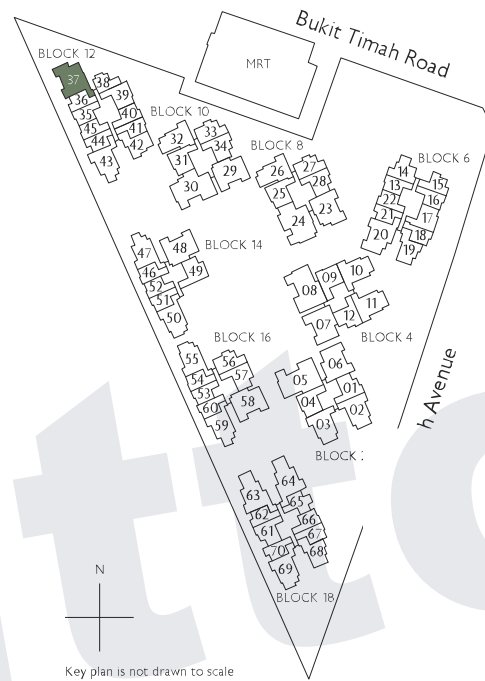
Block 2  
#06-06

0 1 3 5M

\* Mirror Image ^ High Ceiling

All plans are subject to change as may be required or approved by the relevant authorities. All floor areas are approximate measurements only and are subject to final survey. The balcony shall not be enclosed except with the approved balcony screen. For an illustration of the approved balcony screen, please refer to the diagram annexed hereto as "Annexure 1"

# 3-Bedroom + Study



Fridge  
Gas Hob  
Shoe Cabinet  
Washer cum Dryer  
Distribution Board / Store

F  
GH  
SC  
WM  
DB/ST

## Type CS7(p)

104 sq m / 1119 sq ft  
Inclusive of 13 sq m PES  
& 5 sq m AC Ledge

Block 12  
#01-37

## Type CS7

104 sq m / 1119 sq ft  
Inclusive of 13 sq m Balcony  
& 5 sq m AC Ledge

Block 12  
#02-37 to #10-37

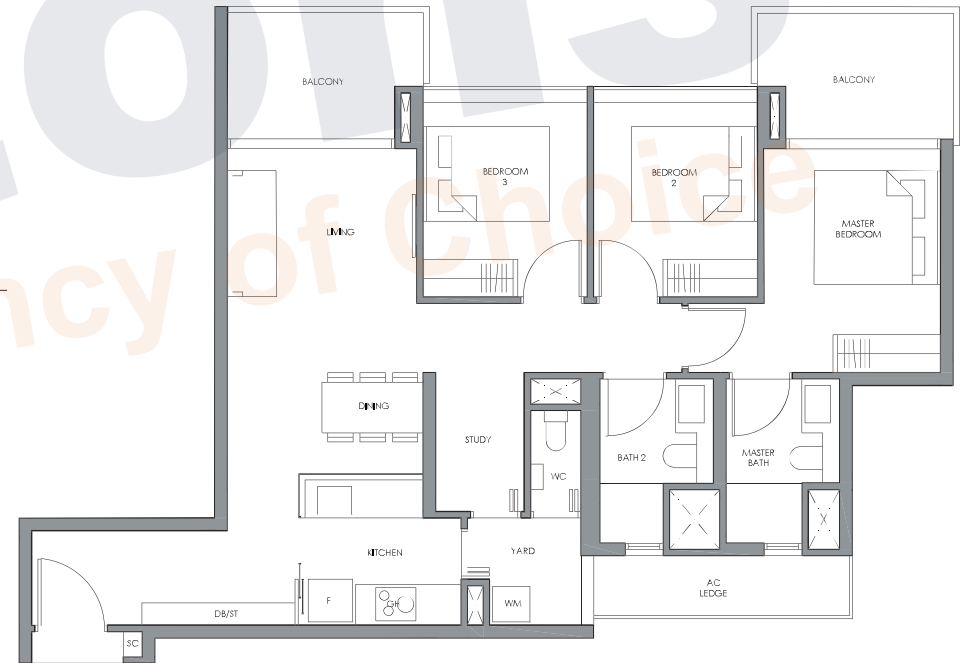
0 1 3 5M

\* Mirror Image ^ High Ceiling

### Type CS7(p)

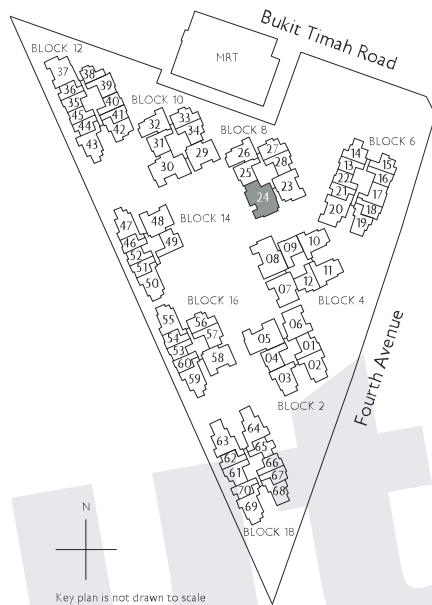


### Type CS7



All plans are subject to change as may be required or approved by the relevant authorities. All floor areas are approximate measurements only and are subject to final survey. The balcony shall not be enclosed except with the approved balcony screen. For an illustration of the approved balcony screen, please refer to the diagram annexed hereto as "Annexure 1"

# 4-Bedroom + Study



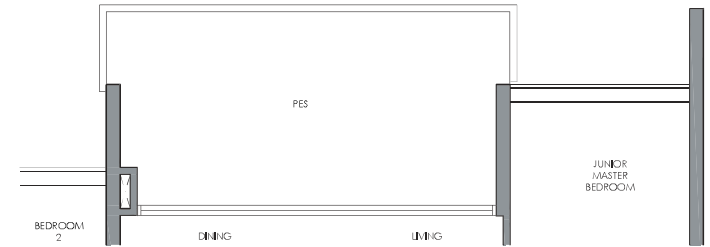
- Fridge
- Gas Hob
- Shoe Cabinet
- Washer cum Dryer
- Distribution Board / Store

- F
- GH
- SC
- WM
- DB/ST



Key plan is not drawn to scale

## Type DS1(p)



## Type DS1



## Type DS1(p)

137 sq m / 1475 sq ft  
Inclusive of 17 sq m PES  
& 5 sq m AC Ledge

Block 8  
#01-24

## Type DS1

137 sq m / 1475 sq ft  
Inclusive of 17 sq m Balcony  
& 5 sq m AC Ledge

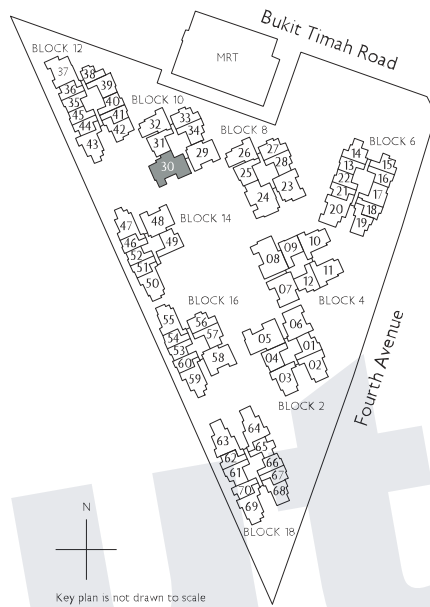
Block 8  
#02-24 to #06-24



\* Mirror Image ^ High Ceiling

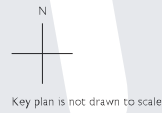
All plans are subject to change as may be required or approved by the relevant authorities. All floor areas are approximate measurements only and are subject to final survey. The balcony shall not be enclosed except with the approved balcony screen. For an illustration of the approved balcony screen, please refer to the diagram annexed hereto as "Annexure 1"

# 4-Bedroom + Study

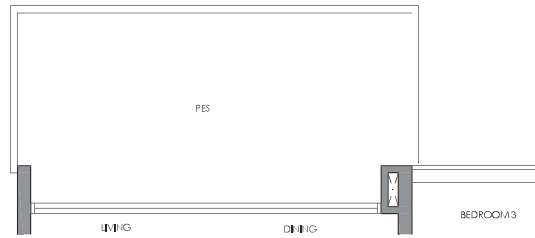


- Fridge
- Gas Hob
- Shoe Cabinet
- Washer cum Dryer
- Distribution Board / Store

- F
- GH
- SC
- WM
- DB/ST



## Type DS2(p)



## Type DS2



## Type DS2(p)

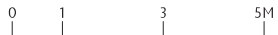
139 sq m / 1496 sq ft  
Inclusive of 17 sq m PES  
& 5 sq m AC Ledge

Block 10  
#01-30

## Type DS2

139 sq m / 1496 sq ft  
Inclusive of 17 sq m Balcony  
& 5 sq m AC Ledge

Block 10  
#02-30 to #06-30



\* Mirror Image ^ High Ceiling

All plans are subject to change as may be required or approved by the relevant authorities. All floor areas are approximate measurements only and are subject to final survey. The balcony shall not be enclosed except with the approved balcony screen. For an illustration of the approved balcony screen, please refer to the diagram annexed hereto as "Annexure 1"

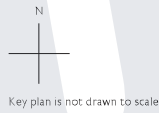


# 4-Bedroom + Study

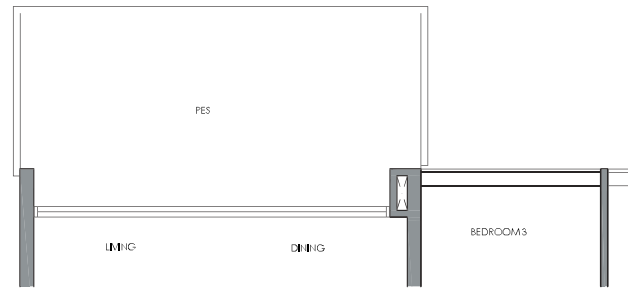


Fridge  
Gas Hob  
Shoe Cabinet  
Washer cum Dryer  
Distribution Board / Store

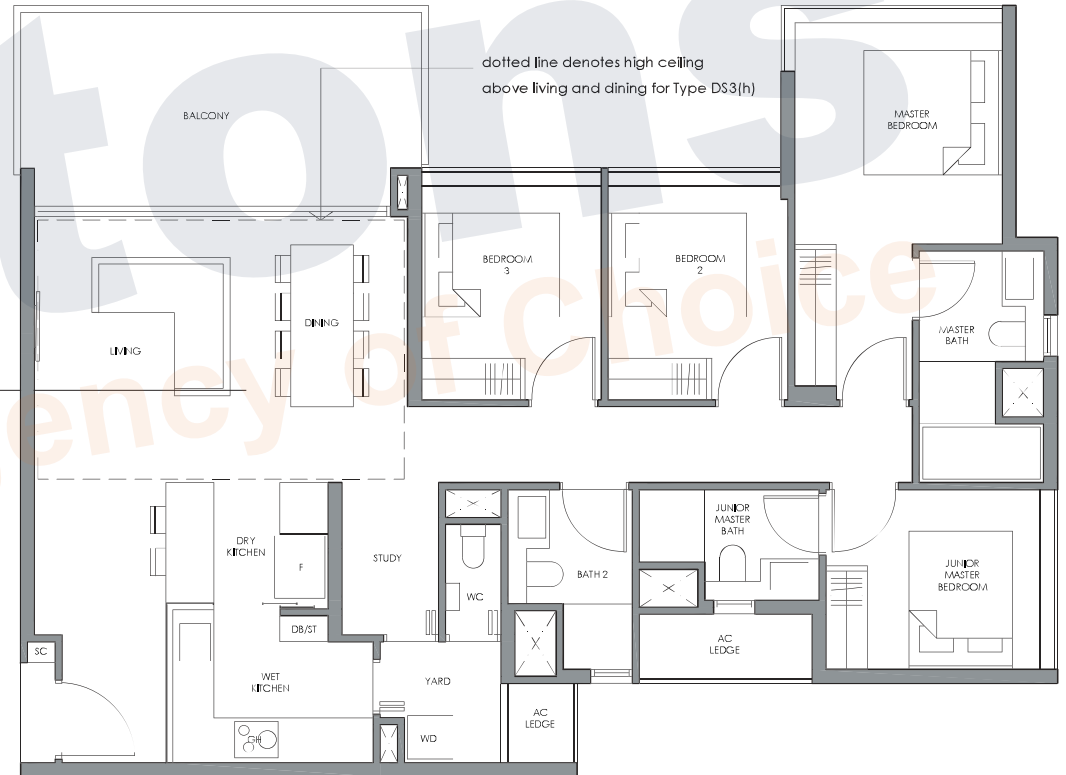
F  
GH  
SC  
WM  
DB/ST



### Type DS3(p)



### Type DS3 Type DS3(h)



### Type DS3(p)

138 sq m / 1485 sq ft  
Inclusive of 17 sq m PES  
& 4 sq m AC Ledge

Block 2  
#01-05 \*

Block 4  
#01-08

### Type DS3

138 sq m / 1485 sq ft  
Inclusive of 17 sq m Balcony  
& 4 sq m AC Ledge

Block 2  
#02-05 to #05-05 \*

Block 4  
#02-08 to #05-08

### Type DS3(h)

138 sq m / 1485 sq ft  
Inclusive of 17 sq m Balcony  
& 4 sq m AC Ledge

Block 2  
#06-05 \*

Block 4  
#06-08



\* Mirror Image ^ High Ceiling

All plans are subject to change as may be required or approved by the relevant authorities. All floor areas are approximate measurements only and are subject to final survey. The balcony shall not be enclosed except with the approved balcony screen. For an illustration of the approved balcony screen, please refer to the diagram annexed hereto as "Annexure 1"